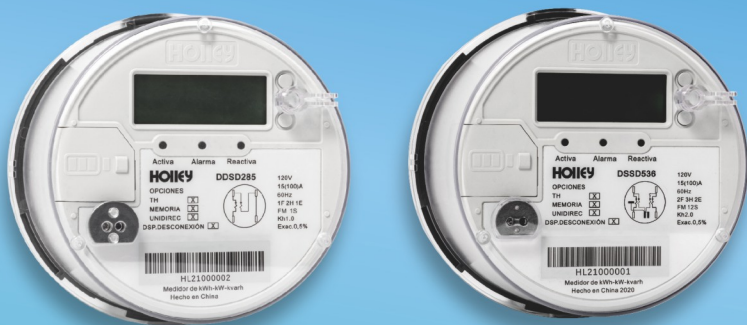


# DDSD285-S56 / DSSD536-S56

## ANSI Socket Meter



### HIGHLIGHT



## OVERVIEW

DDSD285-S56 / DSSD536-S56 are the high-performance and high-precision electronic energy meter designed in accordance with ANSI standards. It is suitable for Socket Base home, outdoor/indoor commercial use. Its accuracy is better than the 0.5 level specified by ANSI C12.20, and the wide working voltage is AC120V~480V. It supports ANSI type 2 optical communication interface, and includes AMI expansion interface. It is a high-end ANSI elec-

tronic energy meter for smart grid. The meter supports multi-channel metering channels and multi-channel demand can be set, it supports TOU, instantaneous value, load profile, event detection, connection and disconnection function.

Form	Volts/Services	Connection	Class	Accuracy	Pulse constant
FM1S	120/240/120~480V,2-Wire,1-Element	1P2W	100/200	0.5/0.2	KH1.0
FM2S	120/240/120~480V,3-Wire,1/2-Element	1P3W	100/200	0.5/0.2	KH1.0
FM4S	120/240/120~480V,3-Wire,1.5-Element	1P3W	20	0.2	KH0.2
FM9S	120/240/120~480V,4-Wire,3-Element	3P4W	20	0.2	KH2.0
FM12S	120/240/120~480V,3-Wire,2-Element	2P3W	100/200	0.5/0.2	KH2.0
FM16S	120/240/120~480V,4-Wire,3-Element	3P4W	100/200	0.5/0.2	KH2.5

## Basic Parameter

Voltage:120~480V,±10%

TA:2.5/15/30A

Frequency:50/60Hz

Operating temperature range: -40°C ~ +80°C

Storage temperature range: -40°C ~ +85°C

## Type Testing

ANSI C12.20 IEC 62052-11 CFE GWH00-34

## Communication

Optical port

PLC/RF/GPRS

ANSI C12.18/ANSI C12.19

## Measurement

Energy:kWh,kVarh,kVAh

Instantaneous:Voltage,Current,Active power,Reactive power

## LED&LCD Display

LED indicator:Active pulse,Reactive pulse,Tamper alarm

LCD Display:Normal display,Alt display,Test mode display

## Tariff Management

4 tariff

## RTC

Clock accuracy:≤0.5s/day(in 23°C)

Daylight saving time:Configurable or automatic switching

Internal battery(non-replaceable)

Expected life at least 15 years

## Event

Standard Event,Manufacturer Event,etc.

Event date and time

At least 300 event records list

## Storage

NVM,at least 15 years

## Relay Control (optional)

Under voltage,Over voltage,Over power limit

Disconnect and Reconnect

Remotely control

## Firmware Upgrading

ANSI online upgrading

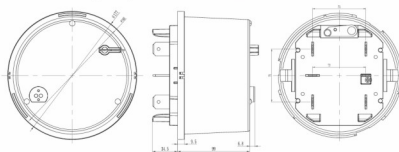
## Mechanical

Enclosure protection:IP54,UL50

Support installation of seals

Meter Case:Polycarbonate

Dimensions(D\*H):177mm\*145.5mm



Weight:Approx.0.88kg

Connection wiring Cross-sectional area:13~36mm²

Connection type:1S/2S/4S/9S/12S/16S

**HOLLEY**  
TECH 华立科技

## HOLLEY TECHNOLOGY LTD.

www.hollemetering.com

overseas@holley.cn +86 5718 9300 297

No 181Wuchang Avenue,  
Yuhang District Hangzhou 310023, China.