

Plastic Seals ERPS300



Applications :

A variety of standard containers, vans, doors, postal services, courier services, bags etc.

Specification :

1. Indicative SEAL.
2. Materials: PP (Polypropylene). Lock core: stainless steel piece
3. All- plastic with pull tight locking mechanism
4. Overall-length: 300mm.

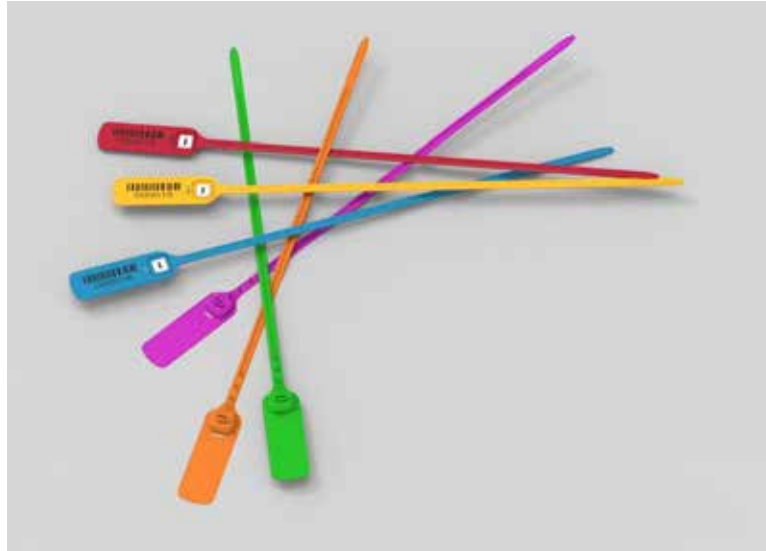
Printing :

The company's logo and name, serial number and laser barcode.

Colors :

Yellow, white, green, blue, orange, red (optional)

Plastic Seals ERPS400



Applications :

A variety of standard containers, vans, doors, postal services, courier services, bags etc.

Specification :

1. Indicative SEAL.
2. Materials: PP (Polypropylene). Lock core: stainless steel piece
3. Pull tight locking mechanism with metal clip inside.
4. Overall-length: 400mm.

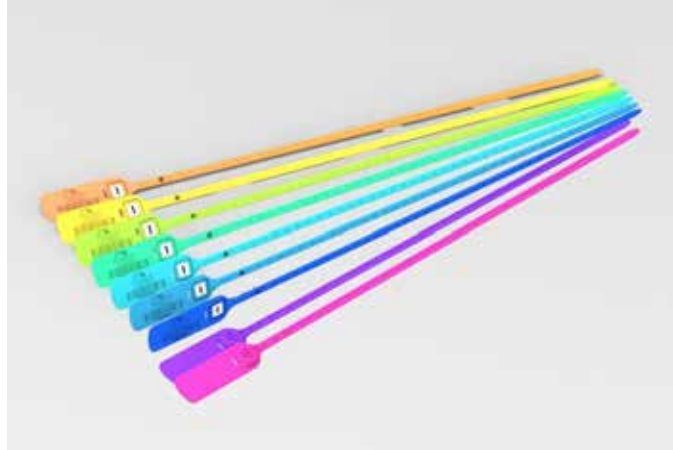
Printing :

The company's logo and name, serial number and laser barcode.

Colors :

Yellow, white, green, blue, orange, red (optional)

Plastic Seals ERPS500



Applications :

A variety of standard containers, vans, doors, postal services, courier services, bags etc.

Specification :

1. Indicative SEAL.
2. Materials: PP (Polypropylene). Lock core: stainless steel piece
3. Pull tight locking mechanism with metal clip inside.
4. Overall-length: 500mm.

Printing :

The company's logo and name, serial number and laser barcode.

Colors :

Yellow, white, green, blue, orange, red (optional)