

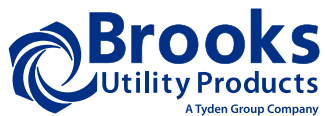


Answers To The Evolving Needs Of The

UTILITY INDUSTRY



We Have Answers.™



After 140 years, we've never stopped asking one basic question: is there a better way?

It's a philosophy that has been part of the culture of Brooks Utility Products since Edward J. Brooks began his journey in 1873 taking his company into the new world of electric metering security with the first seals to secure the first electric meters.

Brooks Utility Products has always believed that providing solutions to their customers' problems would be the driving force behind the products developed and produced – and that commitment still stands today.

Continually evolving technology is changing today's electric utility industry and its needs. And Brooks Utility Products is in a unique position to play a key role in programs like Smart Metering and AMI, to helping utilities operate more efficiently and effectively around the meter.

With a full range of metering related products, including seals, locking devices and other security products, meter adapters and extenders, safety and test equipment, metal cabinets, prewired sockets, enclosures, switches and other accessories, Brooks Utility Products is the number one choice of electric utilities as they look for answers to their ever-changing needs.

LISTENING TO THE INDUSTRY

Our signature, "We Have Answers", remains more than a sign-off, or a marketing slogan. It is an invitation to our customers to bring their biggest challenges to us. In fact in developing our product offering, we pay close attention to the feedback from utilities, by listening to our customers and then developing answers to their problems.

Many of our products today actually were developed from that contact with our customers and listening to their problems. In fact, because of new metering technology our range of adapters, interbases and other meter interface devices now allow utilities to offer AMI, Smart Metering, remote disconnect, load control, auxiliary power, as well as KYZ, and even telephone and fiber optic technology and connectivity.

We have focused much of our new product development on addressing increased worker safety, comfort and productivity, because our customers have made this a top priority. Driven by this desire to increase worker safety, we developed FlashSentry, an innovative solution to an ever present threat of injury to workers from 480 volt arc flash. It isolates the 480 service voltage in a separate sealable compartment from the 120 volt compartment, providing utility workers with reduced arc flash risk while reducing the requirements for additional flame-retardant clothing, but more importantly eliminates the threat of injury to workers from 480 volt arc flash while performing field tests.



Flash Sentry™



ELECTRAK™

Having workers crawling around inside a cramped primary cabinet to service or replace CT/PT equipment is now also a thing of the past. That's because the new patent-pending ELECTRAK™ primary cabinet has roll-out shelves that hold all CT/PT equipment for safe, easy access and service. No more lifting a heavy transformer while bent over inside the cabinet. And service can now be done in half the time it took previously.



Click Ring

We also understand that asset management means that meter security takes on a much more important role. Utility companies can lose up to 2 percent in potential revenue due to energy theft. And that prompted us to develop products like the front access Click Ring for the ultimate in meter security and ease of installation. Ideal for high security remote locations and perfect for AMI deployment, the Click Ring can be installed without a key, assuring revenue protection integrity and key control through the life of deployment.

In each case, Brooks Utility Products listened to customers and developed distinct products to address their needs. Today, we lead the industry with an imaginative and entrepreneurial approach that addresses real-world problems.

product listing

	Meter Conversion / Installation Upgrades	2-3
	Meter Interbase Adapters	4
	Meter Form Conversion Adapters	5
	Power Source Interbase Adapters	6
	Alternative Energy / Installation Adapters	7
	Load Management / Surge Protection	8
	Enclosures	9-11
	Primary Cabinets	12-13
	Meter Sockets	14-15
	Test Switches	16-18
	Meter Socket Safety and Line Test Equipment	19-20
	Temporary Power Restoration	21
	Disconnect / Reconnect	22
	Metering Accessories	23-25
	Indicative Seals	26-28
	Locking Hardware	29-32
	Sealing / Locking Rings	33



Meter Conversion / Installation Upgrades

1402 Series

SSD / STR

SLP

SHD

PTR

PHD

brooksutility.com

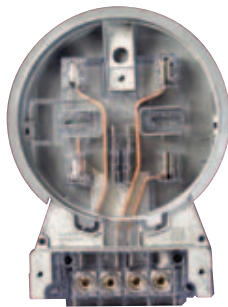


1402 Series

Designed to install single phase socket type meters on bottom-connected overall sheet-metal enclosures where the lowest profile is important.

Models:

- 1402-2W
- 1402-3W
- 1402-2W5J
- 1402-3W5J



SHD Series*

Brooks line of standard, heavy duty and transformer-rated single-phase adapters. Features dead-front safety shield, injection-molded polycarbonate construction, die-cast grounded frame with sealing ring bonding tabs, and larger terminal collars. Adapter is rain tight and rated NEMA 3R for Indoor and Outdoor use. Many standard models are UL Listed (consult factory).

Models:**

- SHD (200 amp, 165 amp continuous)

SHD

- SHD-3W
- SHD-3W-5J
- SHD-3W-5J-5T
- SHD-3W-6J
- SHD-3W-6J-6T
- S2 = 10-9090 Ring installed



SSD / STR*

Brooks line of standard, heavy duty and transformer-rated single-phase adapters. Features dead-front safety shield, injection-molded polycarbonate construction, die-cast grounded frame with sealing ring bonding tabs, and larger terminal collars. Two STR models provide plunger bypass switches. Adapter is rain tight and rated NEMA 3R for Indoor and Outdoor use. Many standard models are UL Listed (consult factory).

Models:**

- SSD (150 amp, 125 amp continuous)
- STR (transformer rated)

SSD

- SSD-2W
- SSD-2W-5J
- SSD-2W-2WM
- SSD-3W
- SSD-3W-5J
- SSD-3W-5J-5T
- SSD-3W-6J
- SSD-3W-6J-6T

STR

- STR-2W
- STR-2W-BP
- STR-3W-BP



PTR*

Brooks patented Polyphase Transformer Rated A to S adapter (PTR) with dead-front safety shield can accommodate the latest meter-cabling requirements. The PTR features the industry's best terminal block design and unitized surge-ground frame. Adapter is rain tight and rated NEMA 3R for Indoor and Outdoor use.

Models:**

- PTR-K
- PTR-Q
- PTR-W
- PTR-N
- PTR-V
- PTR-Universal



SLP*

The Single Phase Low Profile (SLP) offers an adapter that is shorter top to bottom, for installations where space is at a premium. The SLP comes with an optional sealing clip to accommodate a Handi-Ring (see page 33). UL Listed for 125 amps continuous, the SLP converts sockets where a large terminal block can't fit.

Models:**

- SLP-2W (1S)
- SLP-3W (2S)
- SLP-3W-6J5T (3S)
- SLP-6J6T (4S)



PHD*

Brooks patented, self-contained Polyphase Heavy-Duty A to S adapter (PHD) with dead-front safety shield is a simple cost-effective way to replace polyphase bottom-connected meters with modern socket-type meters. The PHD fits in the same mounting positions as the original bottom-connected polyphase meter, or can be used in new installations. The PHD features increased current-carrying capacity: 3/0 conductors; copper (200 amp, 165 amp continuous); 600 volt. Adapter is rain tight and rated NEMA 3R for Indoor and Outdoor use.

Models:**

- PHD-4W
- PHD-Network/3W
- PHD-Network/3W-B
- PHD-Form 13S-8J

***Each of these adapters can easily be upgraded to optional surge ground and/or a sealing ring. Simply add – G2 to the part number for installation of optional surge grounding system.**

****Similarly, add – S2 to the part number if you need the 10-9090 Ring installed.**



OB

Brooks OB meter to S adapter upgrades OB meter installations with regular socket meters. Uses an 8100-series shell with a smaller terminal block mounted inside. Rated for 80 amp continuous.

Model:

- 81-4J-G16-SP4800



LP-K4*

The LP-K4 is among the safest available for converting self-contained K-Base meter enclosures to socket enclosures. Features a dead-front safety shield for guiding the meter into its proper position. Adapter uses large tin-plated conductors for improved current carrying capacity. Rated for 320 amps (285 continuous) for a Class 320 meter, and rated 200 amp continuous for a Class 200 meter.

Model:

- 2700002

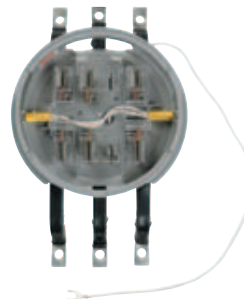


LP-K4 UL*

The LP-K4 UL is rated for 320 continuous amps. This low profile adapter is ideal for converting 400 amp service entrances to accept widely used 320 amp plug-in style meters. This conversion allows the utility more freedom when embarking on a meter change out project.

Model:

- 2700002-UL



LP-K7

The low-profile LP-K7 adapter is a safe and easy way to convert self-contained K7 meter enclosures to a socket enclosure. Featuring a dead-front safety shield for guiding the meter into the proper position. The LP-K7 fits and allows proper clearance for the green plug-in ground feature found on the latest K7 enclosures. Use G suffix for the gasket option.

Model:

- 2700001



K7 to CT

The K7 to CT Conversion Kit replaces expensive bolt-in style meters, and easily fits into the old meter terminal block using the same connectors. It can be used with a CT-rated meter and provides universal mounting options to install new CT-rated pre-wired sockets. Allows for services from 200 through 600 amps.

Model:

- 600-7545

***Reduced jaw openings are available on these models. Simply add the RJ suffix to the part number. For gasket option, use G as the suffix.**



Bottom Fed K4

Allows Class 320 and Class 200 socket-style meters to be installed into existing K-4 400 amp sockets where the full capacity and high cost of the 400 amp meter are not required.

Model:

- 81-4JH-SP3652 (single phase, bottom fed)



K4 to CT

The K4 to CT conversion kit is the single-phase version of our K7 to CT kits. With this addition to our K-Base products, Brooks UPG offers products to satisfy all K-Base metering and conversion needs. The K4 and K7 to CT kits allow utilities to convert K-Base installations to transformer-rated socket style meters.

Model:

- 600-7627



Overhead to Underground Adapter

Used to convert an existing overhead service to an underground installation without having to replace the meter socket or have an electrical inspection done. *Also see page 21, 700 Series Load / Source.*

Model:

- EK-4J-SP4752



Meter Conversion / Installation Upgrades

OB

LP-K4

Bottom Fed K4

LP-K4 UL

LP-K7

K4 to CT

K7 to CT

Overhead to Underground Adapter

1.888.687.3008



Meter Interbase Adapters

LP Series

EK Series

EKD Series

EK with Snap Coupler

EK with Slide Coupler

Mold-In Coupler

Right Angle

brooksutility.com



LP Series

The lowest profile meter interbase adapter in the industry at a depth of 1.2 inches. Features a one-piece injection molded polycarbonate shell and clear polycarbonate shield to prevent contact with live components. Available in four through eight jaw models. Accommodates an RJ-11 telephone jack for direct access. Available in bulk kit form for OEM applications. Many standard models are UL Listed (consult factory).

Models:

- LP-4J
- LP-5J
- LP-6J
- LP-7J
- LP-8J



EK with Snap Coupler

Designed to allow for ease of connecting interface devices to ring or ringless sockets. For ringless socket applications the meter interbase adapter can be inserted into the socket and socket cover reinstalled before snapping the coupler into the adapter.

Utilizes the medium profile extender adapter at a depth of 3.5 inches. Features a one-piece injection molded polycarbonate shell and clear polycarbonate shield to prevent contact with live components. The Snap Coupler is designed as a portal into the meter adapter for interfacing auxiliary equipment including phone jacks, antennas, flex conduit and KYZ pulse leads. A separate enclosure can also be mounted to the Snap Coupler to house additional equipment.

Models:

Numerous kits and adapters available (consult factory).



EK Series

A medium profile meter interbase adapter at a depth of 3.5 inches. Features a one-piece injection molded polycarbonate shell and clear polycarbonate shield to prevent contact with live components. The EK Series accommodates a variety of interface devices such as whole house disconnect switches, PC boards, surge suppression equipment, communication interfaces and recording devices. Available in bulk kit form for OEM applications. Many standard models are UL Listed (consult factory).

Models:

- EK-2J
- EK-5J
- EK-6J
- EK-4J
- EK-8J
- EK-13J



EK with Slide Coupler

Designed to allow for ease of connecting interface devices to ring or ringless sockets. For ringless sockets applications the meter interbase adapter can be inserted into the socket and socket cover reinstalled before sliding the coupler into the adapter.

Utilizes the medium profile extender adapter at a depth of 3.5 inches. Features a one-piece injection molded polycarbonate shell and clear polycarbonate shield to prevent contact with live components. The Slide Coupler has a standard 2" threaded conduit hub as portal into the meter adapter and 4-hole bolt pattern to attach separate enclosures for applications including cellular communications, power quality interface and recording devices.

Models:

Numerous kits and adapters available (consult factory).



EKD Series

A deep profile meter interbase adapter at a depth of 5.25 inches. Features a one-piece injection molded polycarbonate shell and clear polycarbonate shield to prevent contact with live components. The EKD Series accommodates a variety of interface devices that may require additional interbase real estate. Available in bulk kit form for OEM applications. Many standard models are UL Listed (consult factory).

Models:

- EKD-2J
- EKD-4J
- EKD-5J
- EKD-6J
- EKD-8J
- EKD-13J
- EKD-7J



Mold-In Coupler

Used primarily in OEM applications, this adapter with coupler can be used as a stand-alone meter mounting device. When combined with a base, the unit can be plugged into meter sockets to give a means of attaching an enclosure below the meter position.

Models:

Numerous kits and adapters available (consult factory).



Right Angle

Brooks Right Angle adapter is perfect for meters that are difficult or impossible to read due to awkward location or obstructed view. Fits ring or ringless style sockets. Accepts hardened security rings. Places the meter at an 85° angle. Read left or right. R,L designation in part number on 7 and 13 jaw models indicates the direction the meter will face when viewing the socket from the front.

Models:

- RA-4JR-G2
- RA-6JR-G2
- RAR-7JR-G2
- RAL-7JR-G2
- RA-8JR-G2
- RAR-13JR-G2
- RAL-13JR-G2

Note: All meter interbase adapters are available in bulk pack kit



Meter Form Conversion Adapters

2S Socket to 12S Meter

Canadian 3S Socket to ANSI 3S Meter

1.888.687.3008

page 5



2S Socket to 12S Meter

Allows a form 12S or 25S network meter to be installed in a standard residential form 2S meter socket. The adapter provides a wire to attach to the neutral in the meter socket and adds a fifth jaw in the adapter for neutral connection to the meter.

Models:

- LP-5J4B-SP4437
Neutral Connection is 18" of #12 wire.
- LP-5J4B-SP4849
Neutral Connection is 24" of #10 wire.
- LP-5J4B-SP4877
Neutral Connection is 18" of #12 wire.
Narrow blade in position 3 for use in 320 amp sockets.



Canadian 3S Socket to ANSI 3S Meter

Allows an ANSI form 3S meter to be installed in a socket wired to the Canadian 3S standard. The adapter has a plunger bypass to short CT the secondary upon meter removal. It also moves the VT common/ground/neutral connection from position 4 to 5.

Models:

- EK-5B-4J-SP4336*
10 amp bypass plunger
- EK-4B-4J-SP4914*
30 amp bypass plunger

* C-UL Listed

GE Fitzall Meter Conversion Adapters			
Meter Socket Form	Installation Type	GE "KV" Fitzall Meter	Ekstrom Adapter Models
1S	1 ϕ , 2W	16S	LP-4B3J-SP4550
2S	1 ϕ , 3W	16S	LP-4B5J-SP4449
12/25S	3 ϕ , 3W, "Δ"	16S	LP-5B5J-SP4551
13S	1 ϕ , 3W NETWORK 3 ϕ , 3W, "Δ"	16S	LP-5J-SP4552
3S	1 ϕ , 3W 1 ϕ , 2W	9S	EK-4B4J-SP4545 (blade pos. #5) EK-4B4J-SP4556 (blade pos. #5A)
4S	1 ϕ , 3W	9S	EK-6B6J-SP4546
5S	1 ϕ , 3W, 3 ϕ , 3W, "Δ"	9S	EK-7B7J-SP4547
6S	3 ϕ , 4W, "Y"	9S	EK-9B9J-SP4548
7S	3 ϕ , 4W, "Y"	9S	EK-7B9J-SP4549

Form Conversion Adapters		
Meter Socket	Meter	Conversion Adapter
7S	6S	37-10J-7BR-G2-SP2714
24S	6S	37-10J-7BR-G2-SP3572
9S	6S	37-12B-13JHR-G2-3860
7S	9/36S	37-7BJR-G2-SP3967
13S	12S	37-5J5BR-G2-SP3546#
13S	12S	37-5B6JHR-G2-SP4020%
1S	2S	37-2W3M-4JBR-SP588
3S	35/45S	37-4B6J-G2-SP4131
14/16S	12S	37-6J6B-G2-SP3613
16S	12S	LP-5B5J-SP4876
3S	9S	37-4B4JR-G2-SP4140
3S	5/35/45S	37-5B-8J-G2-SP4146
5S Delta	9S Wye	37-7B-10JHR-G2-SP4011

- Potential Position 10 to 5A-3 Phase Wire

% - Potential Position 10 to 5&5A-3 Phase 3 Wire



Power Source Interbase Adapters

2 Amp Fused 240v Supply Extender Adapter

A-base FTTH Adapter

FTTH Field Installation Kit



2 Amp Fused 240v Supply Extender Adapter

Extender adapter with fused leads from either line or load side routed through the 6 o'clock position through either a straight down or a 90 degree non metallic liquid tight conduit fitting. These power leads are terminated with an IEC style connector for use with the Cyber Power Battery Backup, or with unterminated wires to land on a terminal strip. They are run through liquid tight conduit to a battery backup power supply for an optical network terminal (ONT). Adapters can be provided with varying lengths of liquid tight conduit.

Part Number	Conduit Fitting	Length of Conduit	Termination
EK-4J-SP4477 (UL recognized)	Straight down	24"	IEC
EK-4J-SP4795	90 degree	36"	IEC
EK-4J-SP4860	90 degree	60"	IEC
EK-4J-SP4924	90 degree	60"	Wire ends



A-base FTTH Adapter

Using our well known SSD adapter, the unit supplies fused 240 VAC for FTTH applications that do not have a traditional S base meter socket available.

Model:

- SSD-3W-SP4922



FTTH Field Installation Kit

The most comprehensive option in the Brooks FTTH portfolio is the Field Installation Kit. The kit offers utility personnel a turn-key package for installation of the battery backup power supply, battery, adapter, and wiring in one convenient package. The Brooks EK-4J-SP4995-C-S2 adapter (included in the kit) provides an integrated power supply for converting the utility line voltage to 12V. The lower voltage is used to charge and recharge the battery backup device required for most FTTH installations. Kit includes: EK-4J-SP4995-C-S2 Adapter, Brooks 10-9090 Handi-Ring, CyberPower 12V Battery Backup Unit, 7.2aH Rechargeable Battery and 10' of Cable.

Model:

- 1000-SP5027-C-52



Alternative Energy / Installation Adapters

Electric Vehicle Recharge Adapter

5000 Series

Co-Generation Adapter

Generator Interface Adapter

12 VDC Low Voltage Extender Adapter

25 Watt DC Power Supply Adapters

15 Watt DC Power Supply Adapters

1.888.687.3008



Electric Vehicle Recharge Adapter

The Electric Vehicle recharge adapter is an ideal solution for powering of electric vehicles.

Models:

- EVA-H-2943* (horizontal, 30 amp breaker)
- EVA-V-3855* (vertical, 40 amp breaker)
- EVA-H-3856* (horizontal, 40 amp breaker)
- EVA-V-3857* (vertical, 40 amp breaker)
- EVA-H-3858* (horizontal, 40 amp breaker)

*2 x 4 weatherproof junction box mounted to frame to make connections to the charger.



Co-Generation Adapter

This dual meter adapter is used in instances where customer generation such as wind or solar is present. The primary meter measures electricity used from the utility, while the other meter measures energy either generated, or returned. Note: both meters must have detents.

Models:

Several models available (consult factory).



5000 Series

Designed so that twin sockets are connected in series, these adapters provide a means of connecting a variety of test, survey, and control devices in series with the customer's billing meter. Vertical (V) or Horizontal (H) configuration. Co-Generation models accurately record power flow between the utility company and independent power producer.

Models:

Ring Style

- 5221V-G2
- 5221V-5T-G2
- 5221V-6T-G2
- 5223V-7T-G2
- 5223V-8T-G2
- 5203V-13T-G2
- 5221H-G2
- 5221H-5T-G2
- 5221H-6T-G2
- 5223H-7T-G2
- 5223H-8T-G2
- 5203H-13T-G2

Ringless Style

- 5321V-G2
- 5321V-5T-G2
- 5321V-6T-G2
- 5323V-7T-G2
- 5323V-8T-G2
- 5303V-13T-G2
- 5321H-G2
- 5321H-5T-G2
- 5321H-6T-G2
- 5323H-7T-G2
- 5323H-8T-G2
- 5303H-13T-G2

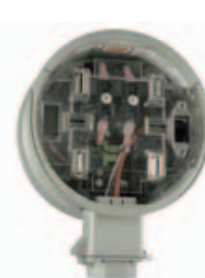


Generator Interface Adapter

A unique, patented, split jaw blade design housed in the EK Slide Coupler shell provides an ideal method for generator connection.

Models:

Consult factory for an adapter to meet your requirements.



Power Supply Adapters

Low Voltage:

Single or three phase extender adapter with built in power supply that converts AC line voltage to 12 VDC. Low voltage access through a hinged and sealable port on the snap in coupler mounted at the 6 o'clock position. Available with RJ-45 connectors in the adapter and coupler to exit metering communications.

25 Watt DC

EK-4J-SP4923 – 25 watt DC power supplied through a molex connector exiting the adapter through a 90 degree liquid tight conduit fitting. Fuses are housed behind the dead-front safety shield.

EK-4J-SP4896 – 25 watt DC power supplied through a molex connector in the snap coupler housing. RJ-45 connector available to use for metering communications. Fuses housed behind dead-front safety shield.

Meter Form: 2S

EK-4J-SP4839 – 15 watt DC power supplied through a molex connector in the snap coupler housing. RJ-45 connector not available with this model. Fuse holders are available in the snap coupler housing. Meter Form: 2S

15 Watt DC

15 watt DC power supplied through pins 7 and 8 of an RJ-45 connector housed in the snap coupler housing. Meter communications available on pins 1-4 of RJ-45 connector. Fuse holder is available in the snap coupler housing.

Meter Form	Part Number
12S	EK-5J-SP4769
5S	EK-8J-SP4771
16S	EK-7J-SP4770
9S	EK-13J-SP4772



Load Management / Surge Protection

Service Limiter / Extender

Surge Guard™

Load Control Relay Adapter

3-Phase SurgeGuard™

Telesurge Adapter

Relay and Switch Adapters

Capacitor Control Adapter

Timer-Relay / Switch Adapter



Service Limiter/Extender

Used as a collection tool, the service limiter provides limited electric service to delinquent customers that would otherwise have their service disconnected – in essence *extending* their service. With a proper program, increased collections can be achieved while projecting a positive image to the public.

Models with improved toggle switch design:

- SL-4789 – 4 Jaw, 2S meter, SPST breaker limits to 120V
- SL-4790 – 5 Jaw, 12/25S meter, SPST breaker limits to 120V
- SL-4791 – 4 Jaw, 2S meter, DPST breaker limits @ 240V
- SL-4792 – 5 Jaw, 12/25S meter, DPST breaker limits to @ 240V
- SL-4793 – 4 Jaw, 1S meter, SPST breaker

Note: Place -XX after the part number, where XX is desired breaker size. Available breaker sizes are 10 amp, 15 amp, 20 amp, 25 amp, and 30 amp. Special breaker sizes may be available upon request.



3-Phase SurgeGuard™

Compact state-of-the-art three phase surge protection package mounted through a slide coupler to an EK Series interbase adapter. Provides superior protection for self-contained polyphase meter services. Using special technology, the 3-Phase SurgeGuard has lower let thru voltages at higher surge currents than standard similar devices. In addition, its technology prevents premature failure under unusual voltage conditions. (Consult factory for available models.)



SurgeGuard™

Brooks low profile meter base surge arrester with an integrated safety shield has been specifically designed for installation at the electrical meter socket for “whole house” residential primary protection. SurgeGuard has been engineered to provide a very high level of surge protection in a low profile meter socket adapter for residential or light commercial installations.

- UL Listed
- NEETRAC Tested
- Industry's lowest profile design
- Three modes of MOV status indication
- 15-year product warranty



Telesurge Adapter

Low-profile extender adapter protects meter from phone line surges with a surge-protection board mounted for easy access between base and safety shield. External phone lines simply connect to terminals on the safety-shield face. RJ-12 jack provided for connection of metering.

Model:

- LP-4J-G2-SP4228



Capacitor Control Adapter

Designed to mount directly on the power pole and accepts socket-based capacitor control devices. Cabling from the capacitor control adapter provides remote control of power factor correction capacitors. Models SP4899 and SP3751 are pre-wired with 25 feet of 10/3 SO cord.

Models:

- 81-4J-SP4899 (Includes tag end strain relief)
- 81-4J-SP3751 (No strain relief on tag end)
- 81-4J-SP3700 (No cabling provided)



Load Control Relay Adapter

As a part of AML, many utilities are offering a solution that will actually shed load automatically when consumption is at its highest point. This load control adapter is a special injection molded cover designed to interface with our standard I-6678 meter base. Methods for interfacing the switch wires to the adapter were also developed in order to create a complete turnkey solution to control usage and shed load at peak times.



Relay and Switch Adapters

A large and diverse range of relay and switch interbase adapter options are available from 15 to 50 amp relays for water heater/ac load control to 200 amp whole house disconnect switches to facilitate remote service disconnect/reconnect.

Models:

- EKD-4J-SP4344 160 amp, requires SPDT control contact with 10 amp 240V rating
 - EKD-4J-SP4345 160 amp, requires SPST control contact with 0.1 amp 240V rating
- Many other models available. Please contact factory with your specific application needs.



Timer-Relay/Switch Adapter

Electronic timers coupled with relays and switches mounted in EK and EKD interbase adapters for active load control and service limiting applications.

Models:

- EKD-4J-SP4350 160 amp, 7 day programmable timer
- EKD-4J-SP4493 40 amp, 7 day programmable timer
- EK-4J-SP4417 30 amp, 7 day programmable timer



Enclosures

NEMA I Indoor
Panel Enclosures

NEMA 3R
Outdoor Double
Door Instrument
Transformer
Enclosures

NEMA 3R
Outdoor Single
Door Instrument
Transformer
Enclosures



NEMA I Indoor Panel Enclosures

Designed for use as surface-mounted control enclosures or instrument cases in environment which do not require oil-tight or dust-tight construction.

Construction:

- 14-gauge galvanized G-90 steel
- Lockable and sealable swing-latch
- Non-removable hinges
- Overlapping spot welded corners
- No knockouts provided
- Mounting holes are provided in the back of the enclosure

- Light Munsell gray, powder-coated, oven-baked, high-gloss polyester finish
- Options: 12- or 14- gauge panels with blind Pem nuts for mounting; holes, hubs, cutouts, louvers, special sizes
- Available in aluminum, mill finish, unpainted- change catalog number prefix from 513- to 563-

Industry Standards

- NEMA Type 1
- UL 50 Type 1



NEMA 3R Outdoor Double Door Instrument Transformer Enclosures

Designed as an economical enclosure for instrument transformers, wiring boxes and junction boxes. Protects against rain, sleet and snow in outdoor installations, or dripping water indoors.

Construction:

- Available in 12 and 14-gauge G90 steel
- Drip-shield top and seamless sides, front and back
- Doors wrap over top, sides and bottom
- Right door extends and seals over the left door
- Slip-pin hinges allow for easy door removal

- Two padlockable pull catches; a hasp is also provided
- Backboards are exterior-grade plywood (finished one side)
- Rainshield is welded to the top to provide NEMA 3R rating
- No gasketing or knockouts
- Available in aluminum, mill finish, unpainted – change catalog number prefix from 524- to 574-
- Light Munsell gray, powder-coated, oven-baked, high-gloss polyester finish

Industry Standards:

- NEMA Type 3R
- UL 50 Type 3R

Catalog No. Enclosure Only	Catalog No. Enclosure with Insulated Mounting	Catalog No. Enclosure with Grounded Mounting	Dimensions in Inches					
			Inside Enclosure			Back Board		No. of Horizontal Bars Furnished
			Width	Height	Depth	Width	Height	
524U6546	524U6546-I	524U6546-G	36	36	13	27-7/8	32	4
524U6547	524U6547-I	524U6547-G	48	48	13	35-7/8	44	4
524U6548	524U6548-I	524U6548-G	60	60	13	48	56	4

NEMA 3R Outdoor Single Door Instrument Transformer Enclosures

Designed for use as current transformer and/or potential transformer enclosures. Provide protection against rain, sleet and snow.

Construction:

- 14-gauge galvanized G-90 steel
- Top overlaps sides and doors to form drip shield
- 2" stainless steel slip-joint hinges allow for easy door removal
- CT bracket and mounting hardware
- ¼ - 20 NC2 Pem Studs allows for multiple bracket mounting positions and easy installation

- Ground lug #2-14 wire
- Options: holes, hubs, cutouts, special sizes, knockouts
- Light Munsell gray, powder-coated, oven-baked, high-gloss polyester finish
- Available in aluminum, mill finish, unpainted – change catalog number prefix from 514- to 564-

Industry Standards:

- NEMA Type 3R
- UL 50 Type 3



Catalog No. with C.T. Bracket	Dimensions in Inches		
	Width	Height	Depth
514U4329	24	25	14
514U4328	32	36	14
514U7946	24	30	14
514U7290	30	26	14

1.888.687.3008



Enclosures

NEMA 3R
Slip-Under
Cover
Weatherproof
Enclosures

NEMA 3R
Polyphase
Pre-wired
Meter
Enclosure



NEMA 3R Slip-Under Cover Weatherproof Enclosures

TYPE SU

Designed for use as wiring boxes and junction boxes. Provide protection in outdoor installations against rain, sleet and snow, or indoors against dripping water.

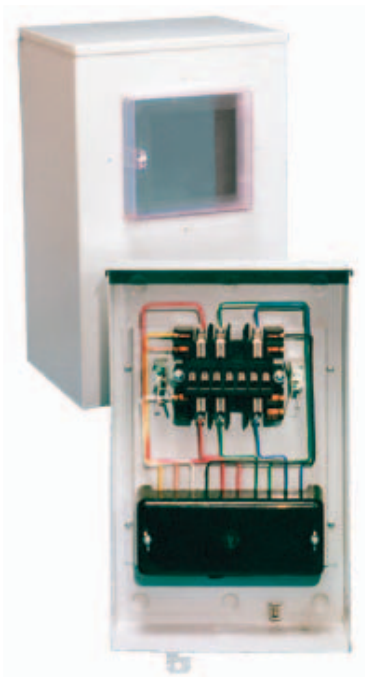
Construction:

- 16-, 14-, 12-gauge galvanized G-90 steel
- Drip-shield top and seam-free sides, front, and back protect from rain, snow or sleet
- Slip-on removable cover
- Embossed mounting holes on back of enclosure
- Provisions for padlocking
- No gasketing
- Options: holes, hubs, cutouts, louvers, special sizes, knockouts
- Light Munsell gray, powder-coated, oven-baked, high-gloss polyester finish
- Available in aluminum, mill finish, unpainted – change catalog number prefix from 511- to 561-

Industry Standards:

- NEMA Type 3R
- UL 50 Type 3

Enclosure Catalog Number	Enclosures WxHxD	Enclosure Catalog Number	Enclosure HxWxD
511U5535	12x8x4	511U5558	12x18x8
511U5562	24x24x8	511U7206	12x24x8



NEMA 3R Polyphase Pre-Wired Meter Enclosure

Pre-wired polyphase unit provides superior protection against vandalism – protection that is not possible with the typical meter socket. In addition, this model offers NEMA 3R protection to the meter, test switch and wiring.

Construction:

- 16-gauge galvanized G-90 steel
- Knockouts: (3) 3/4" x 1" x 1-1/4" on bottom and side; (1) 1-1/4" bottom
- Choice of blank top or hub opening (various size hubs available)
- Ground stud assembly
- Choice of 4- through 13-terminal socket block assemblies
- Test switch, as required

- #12 AWG THHN stranded copper wire to customer specifications
- Light Munsell gray, powder-coated, oven-baked, high-gloss polyester finish
- Clear or gray Lexan demand cover
- Optional finish; pad-mount green with clear or green Lexan demand cover
- Options: holes, hubs, cutouts, louvers, special sizes
- Available in aluminum, mill finish, unpainted – change catalog number prefix from 502- to 552-

Industry Standard:

- NEMA Type 3R

Model:

- 502-4662



Enclosures

NEMA 3R
Slip-Under
Cover
Transformer
Cabinets

NEMA 3R
Hinge Cover
Boxes

1.888.687.3008

NEMA 3R Slip-Under Cover Transformer Cabinets

Designed for use as a current transformer and/or potential transformer and enclosure. Protects against rain, sleet and snow in outdoor installations.

Construction:

- 14-gauge galvanized G-90 steel
- Top overlaps sides and cover
- Two stainless-steel hasps provided for padlocking
- Transformer mounting (cheese) plates provided
- Notched mounting rails for cheese plates
- Reinforced cover

- Light Munsell gray, powder-coated, oven-baked, high-gloss polyester finish
- Options: holes, hubs, cutouts, special sizes, knockouts, insulated wood backboard in place of transformer mounting plates and rails.
- Available in aluminum, mill finish, unpainted – change catalog number prefix from 511- to 561-

Industry Standards:

- NEMA Type 3R
- UL 50 Type 3

Catalog No. with C.T. Bracket	Dimensions in Inches		
	Width (W)	Height (H)	Depth (D)
511U3810	24	24	11
511U3813	24	32	10
511U3809	32	24	10
511U3801	32	34	10
511U3802	30	46	14

NEMA 3R Hinge Cover Boxes

Enclosure Catalog	Enclosure Size WxHxD	Enclosure Gauge	Panel Catalog Number	Panel Size
514U5175	6x6x4	16	4.5x4.5 HCP	4.25x4.25
514U5176	8x6x4	16	6.25x4.25 HCP	6.25x4.25
514U5178	10x8x6	16	8.25x6.25 HCP	8.25x6.25
514U5179	12x10x6	16	10.25x8.25 HCP	10.25x8.25

TYPE RHC

Designed for use as junction and wiring boxes in outdoor installations. Protects enclosed equipment against rain, sleet and snow; these boxes can be used indoors for protection against dripping water.

Construction:

- 14- or 16-gauge galvanized G-90 steel
- Drip-shield top and seamless sides, front and back prevent rain, sleet or snow from entering the box
- No gasketing provided
- Spot welded construction
- Door is hinged on the left side with steel-pinned butt hinges
- Padlockable swing-latch
- Mounting holes
- No knockouts or hub-opening
- Options: Panels (must be ordered separately – blind Pem nuts for mounting) holes, cutouts, louvers
- Light Munsell gray, powder-coated, oven-baked, high-gloss polyester finish
- Available in aluminum, mill finish, unpainted – change catalog number prefix from 514- to 564-

Industry Standards:

- NEMA Type 3R
- UL Type 3

Additional sizes are available. Check with Brooks for model numbers.



Primary Cabinets

Dead-Front Primary Metering Cabinets

4690 Primary Metering Cabinets

7624 Primary Metering Cabinets

7799 Primary Metering Cabinets

Dead-Front Primary Metering Cabinets

Brooks 3-phase primary metering cabinets are available in ratings of 15 kV and 25 kV. The flexible design will accommodate several different types of current and potential transformers. Convenient, weather-protected, and tamper-resistant, these enclosures are ideal for metering underground cable systems.

The cabinets feature a dead-front barrier with Shedwell bushings for load-break inserts and elbows. Accessory parking stands and stainless-steel ground nuts are also included. Large door openings provide excellent accessibility for elbow operation. Designed for padlocks, all doors are equipped with rugged three-point latching and Penta-head

security lock. The instrument transformer compartment has provisions for mounting CTs and PTs, with a ground bus located for easy access to PTs. An insulated inner panel is standard.

Construction:

- 15 kV 200 amp rated – bushing wells rated 200 amps continuous, 95 kV BIL
- 25 kV 200 amp rated – bushing wells rated 200 amp continuous, 125 kV BIL
- Dead-front
- Insulated inner panel
- 12-gauge galvanized G-90 steel
- Stainless-steel hardware including three, half-inch grounding nuts

- Bolted construction
- Padmount-green, powder-coated, oven-baked, high-gloss polyester finish
- Cross-linked roof for strength and water runoff
- Stainless-steel, slip joint door hinges
- Six or nine Shedwell bushing wells for load-break inserts and elbows (provided by customer)
- Mounting rails form CTs and VTs
- Three-point latching mechanism with Penta-Head bolt for security
- Removable lifting eyes
- NEMA 260-1991 danger and warning signs

4690 Primary Metering Cabinets

Our 4690 Series of primary metering cabinets were designed to offer utilities an alternative to common primary metering enclosure designs. The compact design of the 4690 allows for conventional dead-front primary metering without the large footprint of traditional enclosures. At 54" x 54" x 45" the 4690 Series answers the space limitation concern often present in urban, underground primary metering installations at 15kV, 200 amperes. Please contact the factory for additional details.

Model:

- 700-4690-XXX

7624 Primary Metering Cabinets

The Brooks 7624 primary metering cabinet is a step up from our smaller 4690 Series of primary metering cabinets. The 7624 provides utilities with a solution for conventional dead-front primary metering cabinets. With its larger size (79" x 54" x 54") it offers additional capabilities beyond 15kV. With configurations available for 15 or 25kV, 200 or 600 ampere, radial or loop feed you can be assured that the 7624 Series answers your needs.

Models:

- 700-7624-002 15kV, 200A
- 700-7624-004 15kV, 600A
- 700-7624-012 25kV, 200A
- 700-7624-016 25kV, 600A

7799 Primary Metering Cabinets

The 7799 Series offers utilities a fully dead front enclosure for added safety. Utilizing specially designed General Electric 'dead-front' transformers for 15kV, 200 ampere services the 7799 is pared down to a very small size: 48" x 48" x 36". The smaller size when combined with the additional safety of the dead-front transformers makes the 7799 a smart choice.

Model:

- 700-7799 – 15kV, 200 ampere ONLY



ELECTRAK™

There's never been a primary metering cabinet like Brooks UP ELECTRAK. The ELECTRAK's patent pending design contains roll-out shelves that hold up to 400 pounds each of CT/PT equipment. That means workers won't have to crawl inside of a cabinet for repair

work or change outs. Instead they just pull out the shelf for easy access to the transformers. No more lifting a transformer while bent over and inside the cabinet, which can cause worker injury.

7840 ELECTRAK™

The compact 7840 Series ELECTRAK with two pull-out drawers, is rated for 15kV, 200 ampere service and is designed for the General Electric 'dead front' transformers, and can be pre-wired with transformers before delivery to the site.

Model:

- 700-7840 – 15kV, 200A

Dimensions:

54"W x 48"H x 36"D



7950 ELECTRAK™

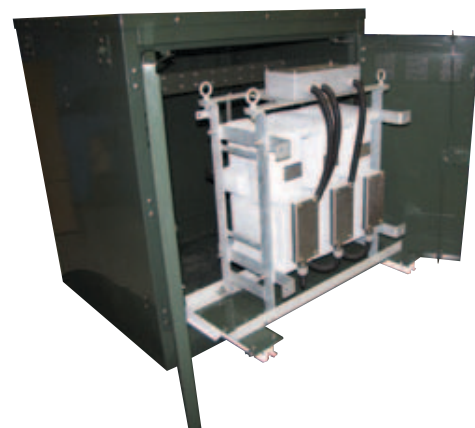
The 7950 Series ELECTRAK with six individual pull-out shelves is designed for higher capacity installations. Rated for 15-25kV, 200-600 amperes, the 7950 can utilize any conventional transformer, i.e. ABB, etc. and can be completely pre-wired with transformers before delivery to the site.

Model:

- 700-7950 – 15-25kV, 200-600A

Dimensions:

79"W x 58"H x 54"D



7990 ELECTRAK™

The 7990 Series ELECTRAK is designed to accommodate the SADTEM KYE 15 or 25KV transformer pack, which are easily accessible with a roll-out shelf allowing workers to service the transformer pack without worry of injury. Combined with the compact design of the KYE, the 7990 ELECTRAK has a much smaller footprint for a streamlined profile and extra large doors allowing for easier worker access. The dead front design minimizes animal contact while the fully encapsulated design of the KYE makes it suitable for underground installations exposed to high water threats.

Model:

- 700-7990 – 5/25 KV, 200 or 600 ampere

Dimensions:

48"W x 54"H x 42"D



Primary Cabinets

7840
ELECTRAK™

7950
ELECTRAK™

7990
ELECTRAK™

1.888.687.3008



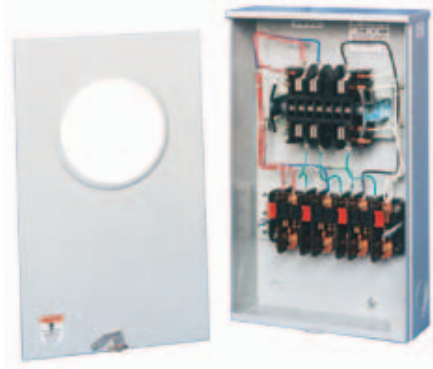
Meter Sockets

3000 Series
Pre-Wired
Sockets

Snap2™

FlashSentry™

Meter Guard™



3000 Series Pre-Wired Sockets

Brooks can pre-wire all Series 3000 sockets with a test switch and wiring harness. Your socket will be built exactly to your specifications, ready for installation. Brooks' factory pre-wired sockets provide an accurate, cost-effective alternative to wiring the sockets yourself.

Construction:

- 16-gauge galvanized G-90 steel
- Aluminum
- Available unwired, without test switch
- Size – W 12" x H 19-7/8" x D 4-3/8"
- Knockouts – (six) 3/4" x 1" x 1-1/4" in bottom, sides, back; (1) 1/4" x 5/8" x 7/8" in bottom
- Rating – 20 ampere, 600 volts AC, transformer rated
- Ring-type – 2-piece covers and screw-type sealing rings provided.
- Cover over test switch can be removed without disturbing meter.
- Ringless 1-piece or 2-piece cover provided; test switch cover and 1-piece covers lock with stainless steel swing-latch and hasp.

- Meter mounting blocks are electrical phenolic. Socket terminals accommodate #14 through #6 cu/al wire.
- Meter retainer clips (Ringless-style) can be attached to surge brackets to help prevent accidental removal meter when socket cover is removed.

Options:

- Barrel lock – KO provided in front cover and barrel lock bracket inside for high security
- Ground stud – single or Dual-Port pad-type connector
- Knockout sizes other than standard
- Lock-ring guards for locking ring on ring-style sockets
- Available in aluminum, mill finish, unpainted – change catalog number prefix from 601- to 651-

Industry Standards:

- NEMA
- ANSI C 12.7
- UL 414



FlashSentry™

The FlashSentry™ VT meter enclosure can be used to convert meter from 12S, 3 wire, 480 volt delta meter services to a transformer rated form 5, 120 volt reducing the potential safety hazards associated with 480 services.

The 480 volt service is isolated in a separate compartment from the metering which only sees 120 volts at the meter. The voltage is reduced by either the Two-Sockets – Two

Meters VT Pack™ with Molex connections or with conventional voltage transformers. Provisions for either are supplied as standard. Enclosures may be supplied with mounting hardware to accommodate field/shop installation of transformers or come completely wired with transformers installed to customer specifications.

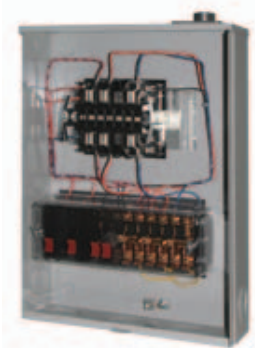


Snap2™

The patented Snap2™ transformer-rated meter panels come in 6, 8 or 13 terminal design, pre-wired to customer-approved test switch and color-coded wiring specs. Utilities save time and reduce costly field mistakes by allowing contractors to install an empty meter enclosure.

Utility personnel then take the pre-wired panel and snap it into place.

- Pre-wired or unwired configurations available
- Unwired version permits utility workers to wire indoors rather than in the field.



Meter Guard™

Designed specifically to deal with increasing failures on 277/480 transformer rated meter service due to voltage surges, moisture condensation and dirt build-up. The new 3218-HV high voltage transformer rated meter socket series is a product that incorporates all the best ideas offered in one. There are many new features that are standard to protect metering failure due to conditions that cause failures in the field. Contact Brooks for specific details.

Transockets

For use with CTs and VTs, bar-type CTs and donut-type CTs

Brooks transockets combine the meter socket and transformer cabinet to provide more cost-effective metering. Transockets' single enclosure for current-transformer metering allows mounting of current transformers and test switch. Suitable for overhead or underground service.

Construction:

- Galvanized G-90 steel
- Aluminum (change prefix to 691-)
- Rated 201-600 amps
- 5-, 6-, 8- and 13- terminal meter blocks

- Mounting provisions for CTs, VTs and test switch
- Ringless front cover
- Maximum 4" conduit knockouts and hub openings with cover plates or hubs
- Pre-wired with current transformers and test switches (681 prefix)
- Light Munsell gray, powder-coated, oven-baked, high-gloss polyester finish
- Options: Pre-wired with transformers and test switch, removable hubs

Industry Standards:

- NEMA
- ANSI C12.7



Meter Sockets

Transockets

201-600 Amp Transockets without CTs and VTs							201-600 AMP Transockets with CTs						
	No. of Terminals	Catalog No.	Hub	Dimensions in Inches			Meter Form	No. of Terminals	Catalog No.	Hub	Dimensions in Inches		
				W	D	H					W	D	H
4S	6	684-3640	(2) C.P.	25	12	33	4S	6	681-3670	(2) C.P.	25	12	33
5S	8	684-3650	(2) C.P.	25	12	33	5S	8	681-3680	(2) C.P.	25	12	33
8S	13	684-3660	(2) C.P.	25	12	33	8S	13	681-3690	(2) C.P.	25	12	33

201-400 Amp Transockets for Use with Donut-Type CTs								
	No. of Terminals	Catalog No.	Hub	Connectors	TRF. MTGS.	Dimensions in Inches		
						W	D	H
4S	6	681-3171	(2) C.P.	500 kcmil	1/4" Pem studs	25	12	33
5S	8	681-3172	(2) C.P.	500 kcmil	1/4" Pem studs	25	12	33
8S	13	681-3173	(2) C.P.	500 kcmil	1/4" Pem studs	25	12	33

*Above units do not include test switch, wiring or transformers. Consult Brooks For your records.

** CTs, VTs, wiring and test switches are optional. If CTs are provided, either a single 600 mcm or duplex 350 mcm lugs can be provided on the CT bars.



200 Amp Mini-Transockets

Combining the transformer-rated meter socket and the transformer cabinet in a compact enclosure, the Mini-Transocket is a cost effective choice for many utilities. The Mini-Transocket comes complete with mounting provisions for current and potential transformers. Brooks can supply the cabinet with transformers installed and completely wired, offering the utility additional labor savings.



800 Amp Transockets

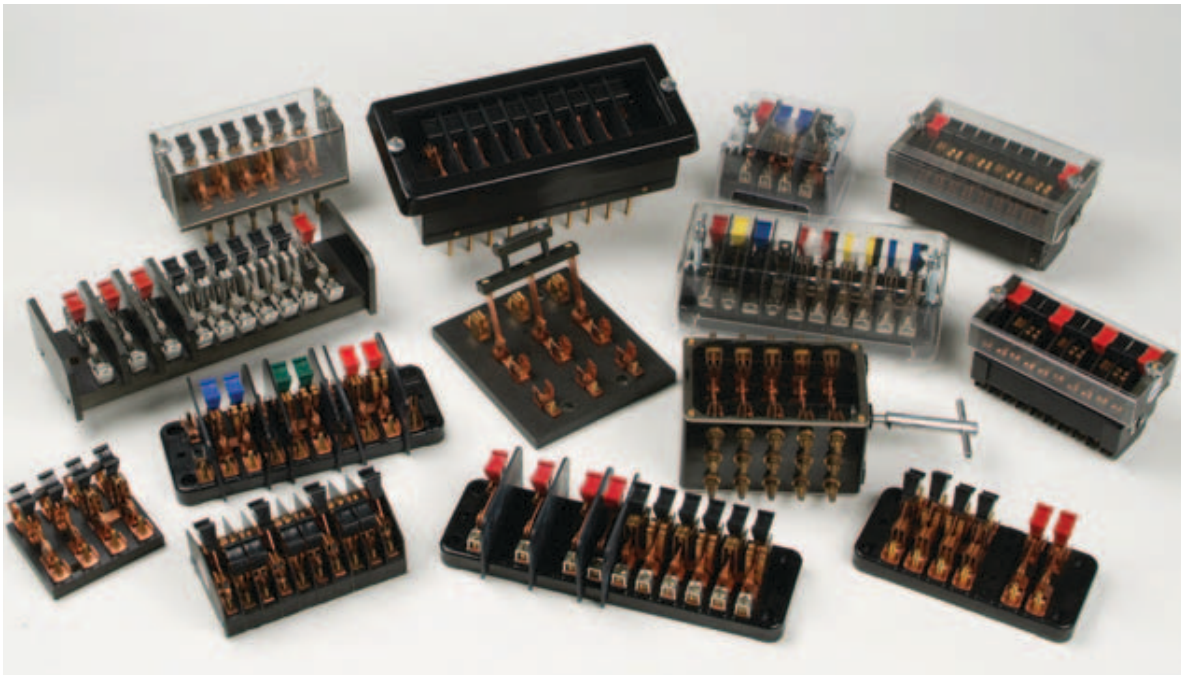
The Brooks 800 amp Transocket line provides utilities with an enclosure designed to accommodate the equipment and conductor used to support larger customer loads. Each enclosure measures 52"H x 30"W x 13.25"D, constructed of 14 gauge G-90 galvanized steel or 0.100 Aluminum. Available in 6, 8, and 13 Terminal Socket configurations complete with test switch and customer specified Current Transformers (voltage transformers available upon request).



Test Switches

Molded-Base Test Switches

Options for Molded-Base Test Switches



Molded-Base Test Switches

Brooks designs and manufactures the finest quality and most complete line of test switches in the industry. Our Molded-Base Test Switches incorporate many features for safety, durability and reliability. All standard switch assemblies are rated at 30 amperers, 600 volts A.C. and meet all applicable IEEE, EEl, Underwriter Laboratories and ANSI C12.9 standards.

All switches are completely non-ferrous, manufactured from high conductivity copper and phosphor bronze. Test switches are furnished unplated and front-connected with red potential and black current handles as our standard offering. Contact Brooks for specific application needs.

Catalog No.	Number of Poles	Base Width (Inches)	Arrangement of Switch Assemblies
104-5401	4	4-1/2	1-19-1-16-26
104-5402	4	4-1/2	1-19-26-19-1
104-5403	4	4-1/2	1-19-1-19-27
104-5404	4	4-1/2	1-19-27-19-1
107-54900	7	9-1/2	1-19-26-19-1-19-26-19-1
107-54942	7	9-1/2	1-19-1-19-1-26-26
110-54580	10	9-1/2	1-19-26-19-1-19-26-19-1-19-26-19-1
110-54583	10	9-1/2	1-19-1-19-1-19-1-19-26-26-26
110-54943	10	9-1/2	1-19-1-19-1-19-4-26-26-26

Additional size and configurations are available. Check with Brooks for additional model numbers.

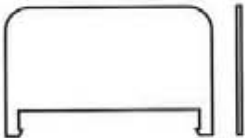
Standard Switch Assemblies



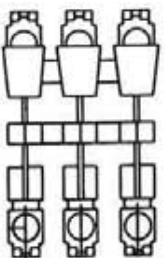
Assembly #1
Single pole potential



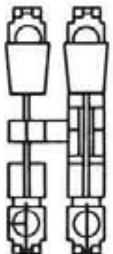
Assembly #4
Solid thru bar



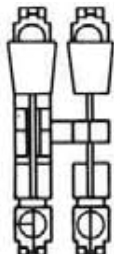
Assembly #19
Barrier



Assembly #18
Three pole current element



Assembly #26
Load test jack double pole current element right hand



Assembly #27
Load test jack double pole current element right hand



Test Switches

Roto Switch

Test Switch Covers

Test Switch End Barriers

Fused Potential Switches

High Voltage Test Switches



Roto Switch

With the Roto test switch, relays and meters may be safely tested at the turn of a key without disconnecting the service. No live parts are exposed. The switch can be used for transfer of relays and meter circuits without removing wiring and is available in 4, 6, 10, 12, 14, 18 and 20 pole combinations.

Roto Test Switch Models				
Catalog No.	Description		Type of Handle	
400-400	Steel, Cadmium Plated, Bakelite, Pistol Grip		Removable	
400-402	Bakelite, Oval, Pistol Grip		Non-removable	
400-406	Bakelite, Oval		Removable	

Catalog No.	Suffix	No. of Poles Each S.P.D.T.	Potential Contacts (break before make)	Current Contacts (break before make)
401-404	1/8"	4	0	4
401-422	1/8"	4	2	2
401-440	1/8"	4	4	0
402-606	1/8"	6	0	6
402-624	1/8"	6	2	4
402-633	1/8"	6	3	3

Additional sizes are available. Check with Brooks for model numbers.

Test Switch Covers

All Brooks test switches can be supplied with either a clear or black opaque plastic cover. Plastic covers are injection molded of Lexan which is a flame resistant, unbreakable UL Listed material.



Slotted Covers for Front Connect Test Switches

No. of Poles	CLEAR Cat. #	w/Optional Captive Hardware	BLACK Cat. #	Hardware w/Optional Captive
4	115-204-LF	115-204-LFCH	115-204-PF	115-204-PFCH
7	115-207-LF	115-207-LFCH	115-207-PF	115-207-PFCH
9	115-209-LF	115-209-LFCH	115-209-PF	115-209-PFCH
11	115-211-LF	115-211-LFCH	115-211-PF	115-211-PFCH

Solid Covers for Back Connect Test Switches

No. of Poles	CLEAR Cat. #	w/Optional Captive Hardware	BLACK Cat. #	Hardware w/Optional Captive
4	115-204-LB	115-204-LBCH	115-204-PB	115-204-PBCH
7	115-207-LB	115-204-LBCH	115-207-PB	115-207-PBCH
9	115-209-LB	115-209-LBCH	115-209-PB	115-209-PBCH
11	115-211-LB	115-211-LBCH	115-211-PB	115-211-PBCH



Test Switch End Barriers

The new test switch barrier from Brooks allows easy installation of safety barriers to installed test switches in the field. Helps to separate voltage switches when adjacent to current switch or to another voltage switch at a different voltage. Conforms to ANSI C12.9 standards for test switches for transformer rated meters.

Fused Potential Switches

Potential switches are available in single or multiple pole arrangements with provisions for mounting a 30 or 60 ampere fuse.

High Voltage Test Switches

The test switch is made on a Resiten base material which has excellent insulating properties. Potentials are spaced further apart and are protected by barriers that are higher and thicker for added safety.

1.888.687.3008



Test Switches

BFT Switch

TAP Terminal/
Test Block
Switch

Reactive
Volt-Ampere
Metering
Switches

Compact Test
Switches

Mini-Compact
Test Switches

Options for
Molded-Base
Test Switches



BFT Switch

The BFT from Brooks can be used in all areas where traditional FT switches are used – from isolating intelligent electronic devices (like relays to meters) to calibrating and testing. Fits exactly into the panel cutout of existing FT switches for easy retrofit and ensures “finger safety” since each electrical contact is embedded in a plastic coating.

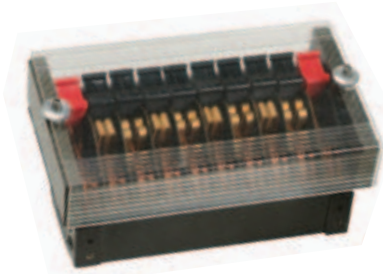
Models:

- Standard – includes pins, dust cover and test access via test plugs
- Plus – includes pins, dust cover and banana jack access on B-side



TAP Terminal / Test Block Switch

The Brooks TAP Switch combines two functions into one unit – the terminal and test block – to make testing faster, easier and safer. Its modular design allows for DIN – rail or screw mounting to save wiring time and panel space, and comes in customized length and configuration.

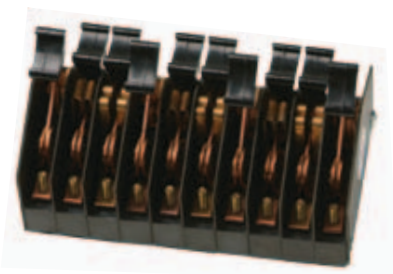


Reactive Volt-Ampere Metering Switches

A double-throw type that permits testing reactive meters. Commonly known as “heel-and-toe switches,” they are available in two types: “make-after-break” and “make-before-break.” All Brooks heel and toe switches are furnished “make-after-break” unless specified otherwise.

Compact Test Switches

Brooks Compact Test Switches allow for simple, safe and consistent isolation of equipment for the purposes of testing, repair work or routine maintenance. Designed with the switchboard and protective relaying departments in mind, our compact test switches take up less space than conventional molded-base test switches. Our product offering provides complete flexibility with configurations ranging from 1 pole to 30 poles or any combination of currents and voltages. Further flexibility is delivered through the mounting methods and connections available: flush, semi-flush, front connected or back connected.



Mini-Compact Test Switches

The Mini-Compact Test Switch offers additional space savings with its smaller size. Each pole of a Mini-Compact Switch is appreciably shorter and narrower than a like and similar pole on a Compact Test Switch. Despite its smaller size, the Mini-Compact product is rated for the same service types and offers the same configuration flexibility found in the compact line of switches.

Options for Molded-Base Test Switches

In addition to our standard unplated front-connected switches, customers may choose a number of additional options to suit their particular application requirements. Any Brooks Molded-Base Test Switch may be configured with any of the options below:

Reverse Potentials - Potential switch handles are mounted in reverse. In this arrangement the potential switches are de-energized when open, offering additional safety.

Plating - Tin- and nickel-plating are available and provide additional protection for corrosive environments.

Screw Terminals - Utilizing a captive pressure pad and box connector this option provides an easy and secure way to connect wires to front-connected switches. Simply add ST to the part number to add screw terminals.

Color-Coded Handles - A wide array of colors (included two-piece/two-color) are available for customers to match the handle colors to their particular wire color codes.

Back-Connected - Any Brooks test switch can be furnished in a back-connected arrangement with insulated bushings for panel mounting.

Custom Switches - In addition to the molded-base offering, Brooks also produces a variety of specialty switches for high voltage application, heel-and-toe switches for reactive metering and fused potential switches. Please consult your local Brooks representative for more information.

Channel Barriers - Brooks offers channel barriers as an option for a permanent means of isolating potentials.



Meter Socket Safety and Line Test Equipment

A-Frame Meter Warm-Up Board

Portable Meter Warm-Up Stand

Quick-Check Load Device

Two-Element Load Device

Street Light Tester (Stray Voltage Tester)

EK Line Buster

Line-Neutral Tester

Meter Evaluator

S-120 Single Phase Socket Tester



A-Frame Meter Warm-Up Board

Safe and dependable, our warm-up boards provide voltage directly to the meter so personnel can program electronic meters in the shop, prior to on-site installation. Model 3904 A-frame units are available with socket controls at each of the 30 positions, or in groups of three positions per control. Custom design and styles are available.



Two-Element Load Device

Two models enable safe application of 2500-watt load to "non-registration" meters.

Models:

- 1000-SP3548 (240 volt)
- 1000-SP3696 (480 volt)



Line-Neutral Tester

Offers meter technicians an effective method to locate loose, open, or faulty connections to lines and neutral. Simply insert device into meter socket after rerouting entire load to incoming line. Voltage differential is easy to read on two LED volt meters supplied. 5000-watt load.

Model:

- LT-3985



Portable Meter Warm-Up Stand

This single-position desk-top portable warm-up stand was designed to permit convenient programming and/or warm-up of electronic meters.

Models:

- 807-3905-2212 (single phase form 2S)
- 807-3905-3888 (form 2,4,5,12,25S)
- 807-3905-3606 (form 6,8,9S)
- 807-3905-2712 (form 14,15,16S)



Street Light Tester (Stray Voltage Tester)

With several high profile incidents in the news, the Brooks stray voltage tester offers utilities the ability to test street lights, crosswalk signals, manhole covers, and any other potentially energized area for the presence of unwanted voltage. Be proactive and increase public safety with this portable and easy to use device.

Model:

- 1000-SP4677



Meter Evaluator

Provides a quick and simple means to check the accuracy of a watt hour meter in the field. Particularly useful in the investigation of high bill complaints.

Models:

- ME-2500 (ring style), ME-2510 (ringless)
- ME-2500 SP4519 (shown)
- ME-2500 SP4667 (Canada)



Quick-Check Load Device

Designed for safely applying a load to "non-registration" meters to determine if the disk turns. 1300 watts for voltages up to 240 volts.

Models:

- 1000-SP2407 (2 probes)
- 1000-SP3526 (1 probe, 1 alligator clip)



EK Line Buster

Very portable and ergonomic line buster delivers 2500 watt load alternately to each phase. Digital LED voltmeters register voltage fluctuations that indicate loose or open neutral conductors. Front access plug-in cable conductor assemblies allow simplified connection to the neutral – and to both phases for bottom connected installations.

Models:

- LT-4629
- 1000-SP4639 (kit)



S-120 Single Phase Socket Tester

Protect your meter installer with these safe, simple-to-use test devices. Check meter sockets for short circuits, grounds, backfeed and wiring errors before meter installation. Help protect employees who set meters from dangerous flash and fault conditions at the meter socket.

Model:

- S-120 (single phase)

1.888.687.3008



Meter Socket Safety and Line Test Equipment

P-277 Polyphase Socket Tester

Indicative Socket Testers (Voltage Indicating Socket Tester)

Indicative Socket Testers (Load Indicating Socket Tester)

Indicative Socket Testers (Voltage and Load Indicating Socket Tester)

Meter Test Jack

CT Jack

Portable Meter Socket Jaw Tester

Simulated Meter Test Jumpers

Equipment Bag



P-277 Polyphase Socket Tester

The polyphase socket tester provides a safe and effective means to quickly check 277/480 volt meter sockets for wiring errors, short circuits, and back feed conditions – prior to setting the meter.

Model:

- P-277



Indicative Socket Testers (Voltage and Load Indicating Socket Tester)

Protects both the installer and the end-customer's equipment from dangerous wiring errors. Prior to setting meter, VLIST safely checks phase-to-phase and phase-to-ground potential while the circuit breaker protects against faults and indicates significant connected loads.

Models:

- VLIST-SP3667 (10 amp breaker)
- VLIST-SP3920 (32 amp breaker)



Portable Meter Socket Jaw Tester

Specially designed force gauge for measuring the insertion and extraction forces associated with installing a socket-type meter into a meter socket. ANSI/UL 414 Standard for Meter Sockets, Section 17 defines maximum allowable insertion force.

Model:

- 8300 SJT



Indicative Socket Testers (Voltage Indicating Socket Tester)

The VIST incorporates all the safety features of our standard socket testers with the added benefit of an indicating voltmeter to safely determine the values of phase-to-phase and phase-to-ground voltages.

Model:

- VIST-SP3614



Meter Test Jack

The meter test jack is used for interfacing with a utilities' NIST traceable watt hour standard and used in meter calibration. The rear of the adapter has jumpers that allow the customer to remain in service while meter calibration is being performed. A variety of models are available for different meter forms.

Models:

- TJP-6504 (form: 1S, 2S, 3S, 4S, 12S, 14S, 15S, 16S, 17S, 25S)
- TJCT-6254 (form: 5S, 6S, 8S, 9S, 10S, 13S)



Simulated Meter Test Jumpers

...for heat rise testing, as defined by UL 414 dated March 24, 1999, figures 13.2 and 13.3. We have these manufactured for use in our own test lab and know they are hard to find.

Models:

- 5-1646 (200 amp)
- 5-1647 (320 amp)



Indicative Socket Testers (Load Indicating Socket Tester)

In addition to safely checking for phase-to-phase ground faults at the meter socket prior to setting the kWh meter, the load indicating socket tester allows determination of connected load inside the home prior to setting the meter.

Models:

- LIST-SP2653 (25 amp meter)
- LIST-SP2808 (50 amp meter)



CT Jack

Designed for field testing current transformers that are installed in automatic bypass sockets. Single or polyphase.

Models:

- 37-SP1626 (single phase form 5S)
- 37-SP1642 (polyphase forms 8,9S)
- 37-SP1850 (single phase forms 3,4S)
- 37-SP2300 (polyphase form 7S)
- 37-SP2553 (polyphase forms 6,8S)
- 37-SP3501 (polyphase forms 6,9,10S)



Equipment Bag

Made of corded nylon, Brooks padded equipment bag is excellent for carrying or storing your test equipment.

Model:

- 30-1053



Temporary Power Restoration

Temporary Meter Power Device / UL Listed

RVMP

240 Volt Receptacle

700 Series Load / Source

Meter Socket Jumper Covers

Dead Leg

Slide Coupler TMP



Temporary Meter Power Device / UL Listed

Designed to help utilities provide temporary electric service to building contractors at new construction sites. Replaces more costly, cumbersome ways to provide temporary service. Isolates power from house panel, allowing the device to be used at flood or fire damaged homes.

Models:

- TMP-2600 (with one 20 amp, 120 volt duplex GFCI receptacle and one 20 amp, 240 volt single receptacle)
- TMP-2649 (with two 20 amp, 120 volt GFCI duplex receptacles)
- TMP-2750 (with one 20 amp, 120 volt duplex GFCI receptacle and one 20 amp, 240 volt receptacle)
- TMP-2751 (with two 20 amp, 120 volt GFCI duplex receptacles)



RVMP

The Recreational Vehicle Meter Powered Device (RVMP) allows access to a Recreational Vehicle Receptacle and also dual 120 Volt round fault protected receptacles at a meter socket. When installed, the RVMP leaves the load side of the meter socket de-energized. All outlets are circuit breaker protected and metered by a standard form 2S meter. Ideal for use with emergency housing in the event of a disaster. This unit allows contractors access to metered power as well for reconstruction purposes.

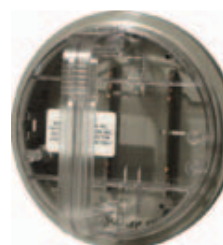
Models:

- TMP-4753 (30 amp)
- TMP-4756 (50 amp)



240 Volt Receptacle

The 240 Volt Receptacle outlets provide an unmetered outlet at the meter socket. Ideal for use by utilities who have a need to power a test board while accuracy testing their billing meter.



Meter Socket Jumper Covers

These patented jumper covers provide a safe, simple method to bypass a customer's meter socket. Available in single phase or polyphase.

Models:

- EJC-4B (single phase)
- EJC-6B (polyphase)
- EJC-3BL (left leg)
- EJC-3BR (right leg)



700 Series Load / Source

The 700 Series temporary service adapters provide a quick method of installing emergency service to individual customers, either from a transformer or a neighbor's service box.

Model	Type	Style	Hub
722A	Source	Ring	@ 6:00
722B	Load		@ 6:00
722A-R-SP165	Source		@ 3:00
722B-R-SP165	Load		@ 3:00
722A-L-SP170	Source		@ 9:00
722B-L-SP170	Load		@ 9:00
732A	Source Ringless		@ 6:00
732B	Load		@ 6:00



Dead Leg

The patented, dead-leg adapter allows the safe resumption of temporary service when one leg of a 120/240 volt service is dead due to events such as storm damage or faulted underground service cable.

Model:

- 37-2J-4B-SP3561



Slide Coupler TMP

Our highest powered temporary metered power device, the slide coupler TMP provides 80 amps of metered power for use at construction sites.

1.888.687.3008



Disconnect/Reconnect

EK Disconnect

Service Disconnect Adapter

Reconnect and Disconnect Device

Meter Disconnect Device

Meter Disconnect Device

Meter Device Disconnect Sleeves – The Blue Boot

LPs with Potential



EK Disconnect

Safely and easily disconnect and reconnect customer electrical service by bypassing meter sockets under load. Load-side indicators warn of unwanted potential, eliminating the risk of possible faults during reconnect. Patented ejector handle and high-fault-interrupt circuit breaker ensure safe, quick and proper removal. Available as a complete kit including EK Disconnect device, LP Series adapters, sealing rings, bladed covers and convenient equipment bag.

Models:

- EK-DISCONNECT
- EK-DISCONNECT-SP4349 (no lights)
- EK-DISCONNECT-SP4520 (special label)



Reconnect and Disconnect Device (RADD)

Safely checks single-phase sockets for faults and backfeed conditions prior to reconnecting kWh meters. Its rugged and durable design also allows safe disconnects on single phase lever bypass or horn bypass sockets through its built-in 50 amp circuit breaker.

Models:

- EK-4B-SP4734
- EK-4B-SP4729 (shown)

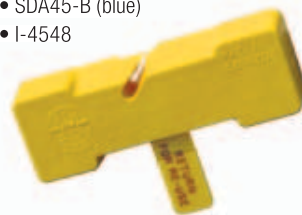


Service Disconnect Adapter

Brooks patented, reusable service disconnect adapter provides a safe and economical means of disconnecting service on installations where it is not desirable to return meters to the shop. Meter readers will quickly spot this disconnect, because the meter is at a 45° angle.

Models:

- SDA45 (standard is gray)
- SDA45-B (blue)
- I-4548



Meter Disconnect Device

Made of high-impact nylon, MDD 45 can be reused many times. Reduces disconnect costs to pennies per meter. Excellent dielectric strength of 8 KV. Can be used as line insulator when socket is being serviced. When used for meter disconnect, meter is rotated 45°. Rotation positively disconnects meter, with no possibility of current leakage.

Model:

- MDD 45



Meter Device Disconnect Sleeves – The Blue Boot

Brooks MDDS product offers an improved design over the previously offered MD-5 class of disconnect sleeves. Disconnect sleeves, commonly referred to as meter boots, are used by electric utilities to safely isolate a meter temporarily from the electrical service while keeping the meter in place. The Blue Boot, stamped from Kodar® PETG Plastic, offers a distinctive shape to prevent premature tearing of the sleeve along common stress points. Due to the material and the unique shape of the sleeve the strength of the product is substantially improved. Try the Blue Boot today and take advantage of a more durable sleeve.

Model:

- 600-MDDS (Gross Part No.)

LPs with Potential

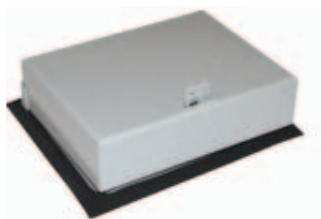
Low profile adapter contains only line-side connections in order to provide potential to metering electronics AMI, TOU, IDR on a disconnected meter stored in the meter socket. Can be molded of red or green polycarbonate for high visibility of disconnected meter.

LP Models: Red	Gray	Green	Straight thru Jaw/ Blade Positions	Meter Forms
LP-5J-SP4362	LP-5J-SP4363	LP-5J-SP4691	1,3,5,7,9	2,12,14,15,16,17,25S
LP-2J-SP4364	LP-2J-SP4365	LP-2J-SP4679	1,3	2S
LP-3J-SP4366	LP-3J-SP4367	Call factory	1,3,5	2,12,25S
LP-4J-SP4368	LP-4J-SP4369	Call factory	1,3,5,5A	2,12,25S
LP-4J-SP4370	LP-4J-SP4371	Call factory	7,8,9,10	13S
LP-4J-SP4372	LP-4J-SP4373	Call factory	1,3,7,9	14,15,16,17S



Meter Protective Covers

With the increased cost of today's sophisticated electric meters, it is more important than ever to protect that investment from vandalism, tampering and severe storms. Brooks protective covers are constructed with heavy gauge galvanized steel and powder coated with an oven-baked enamel to withstand abuses that would normally destroy the meter. Protective meter covers greatly reduce current surge during electrical storms.



Demand Reset Covers and Window Protective Shields

Brooks Demand Reset Covers are available in clear or opaque Lexan with removable hinges or in 18-gauge steel. Window protective shields provide 18-gauge steel security.



Interchangeable Gasketless Hubs and Hub Cover Plates

Brooks die-cast aluminum hubs are now available in sizes from one to four inches. These high-quality hubs are removable and gasketless and are the choice of many electrical distributors.

Brooks round protective covers are available with or without a tough Lexan window, in a variety of lengths to fit almost any size meter. The hinged face plate opens to allow full access to demand reset meters. All units are easily secured with seals or padlocks.

Mounting ears are provided for installation on Ringless meter sockets. For ring-type meter sockets, the mounting ears are snapped off, and mounting screws provided are used to install the cover.

Construction:

- 16- and 18- gauge galvanized G-90 steel
- Hinged door locks with seal or padlock
- Outside diameter 8 inches (specify desired depth)
- Light Munsell gray, powder-coated, oven-baked, high-gloss polyester finish

Options:

- Lexan window
- Locking ring
- Standard package of 6 per size per case (extra for broken case lots)

Current Part Number	Former Part Number	Depth in Inches	Weight of each in Lbs.
685-521040	UKS-558	5-5/8	4
685-521041	UKS-8	8	4.5
685-521042	UKS-9 and DRS-9	9	5
685-521043	UKS-10	10	5.3
685-521044	UKS3-9	9*	5
685-521045	UKS3-10	10*	5.3

*For polyphase meters

Additional sizes are available. Check with Brooks for model numbers.

Demand Reset Covers			
Catalog No.	Material	in Inches	Dimension Description
500-3590	Lexan	4-1/2 x 6	Gray opaque with removable hinges
500-3590-H	Lexan	4-1/2 x 6	Gray opaque with non-removable hinges
500-3590-CL	Lexan	4-1/2 x 6	Clear with removable hinges
500-3590-CLH	Lexan	4-1/2 x 6	Clear with non-removable hinges
500-3591	Lexan	7 x 7	Gray opaque with removable hinges
500-3591-H	Lexan	7 x 7	Gray opaque with non-removable hinges

Window Protective Shields			
500-7160	Steel	4-1/2 x 6	18-gauge galvanized G-90 Munsell gray steel
500-7160-B	Steel	4-1/2 x 6	With lock hasp, 18-gauge galvanized G-90 Munsell gray steel

Additional sizes are available. Check with Brooks for model numbers.

Interchangeable Hubs	
Catalog No.	Small Base Knockout Opening in Inches
600-3077B	1
600-3077C	1-1/4
600-3077D	1-1/2
600-3077E	2
600-3077F	2-1/2
600-3078B	3
600-3078C	3-1/2
600-3078D	4

Removable Hub Cover Plate	
Catalog No.	Material
600-3077A	Steel
600-3077AA	Aluminum
600-3078A	Steel (large)
600-3078E	Aluminum (large)



Metering Accessories

Meter Protective Covers

Demand Reset Covers and Window Protective Shields

Interchangeable Gasketless Hubs and Hub Cover Plates

1.888.687.3008



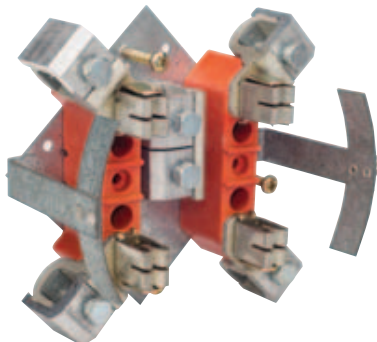
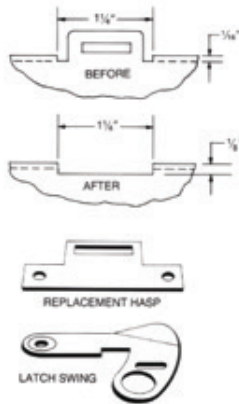
Metering Accessories

Ring and Block Assembly for Panelboard Metering 5790 Series

Replacement Hasps for Ringless Meter Sockets

Polyphase Meter Extension Cover

Universal Block Replacement Assembly



Ring and Block Assembly for Panelboard Metering 5790 Series

Brooks 5790 Series provides an economical metering position in panelboards, switchgear and enclosed metering packages. Units are also available with a steel mounting bridge for installation on wood backboards or in

steel enclosures. Install socket-type meters quickly and easily in locations where meter sockets are not available, or replace bottom-connected meters.

Catalog No.	Description
600-5790	15-terminal ring and block assembly
600-5790-A	13-terminal ring and block assembly with bridge
600-5790-B	13-terminal ring and block assembly
600-5790-E	8-terminal ring and block assembly

Replacement Hasps for Ringless Meter Sockets

Realize big savings with Brooks stainless-steel replacement hasps. Seal and secure damaged, rusted, vandalized ringless meter socket covers quickly and economically. The socket does not need to be removed from service and scrapped. Replace hasps in the field with toolbox tools. Resist corrosion and tampering. Sold in packs of 25.

Construction:

- 302 stainless-steel
- Body is .062 inches thick, keeper is .022 inches thick
- One-piece design

Catalog No.	Description
687-RH-101	Flat replacement hasp
687-RH-102	Swing latch

Polyphase Meter Extension Cover

Tens of thousands of 10-inch-deep A-base polyphase meter enclosures are in service throughout the U.S. However, newer, longer electronic meters require enclosures 11- or 12-inches deep – too long for many of those old enclosures. Brooks high security low cost extension cover solves this dilemma. It is designed to be attached in the field of the existing enclosure, using sheet metal screws or rivets. Maintain meter security and save the considerable expense of replacing the entire customer service.

Construction:

- 16-gauge galvanized G-90 steel
- Light Munsell gray, powder-coated, oven-baked, high-gloss polyester finish
- Continuous hinge for ease of use and long life
- Fixed Lexan window, 6" wide by 4" high

Models:

- 686-3827 (windowless model)
- 686-3827-1 (model with window)

Universal Block Replacement Assembly

The Brooks Universal Block Replacement Assembly allows field replacement of most back mounted meter socket interiors without regard to enclosure depth. The height of the assembly can be easily adjusted to requirements of the socket enclosure. Available with a 100 or 200 AMP current rating.

Model:

- 81-4JH-SP1734, 200 amp with hex drive wiring lugs
- 81-4JH-SP1735, 100 amp with hex drive wiring lugs
- 1000-SP1636 Mounting Tool includes level, marking awl, drill bit



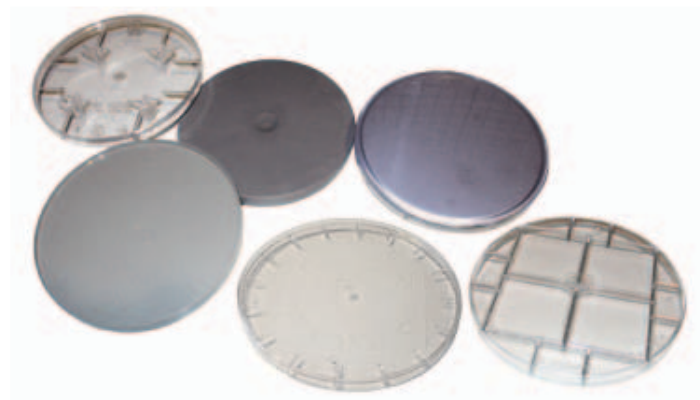
Metering Accessories

Meter Socket
Covers

Jumpers and
Jumper Links

Horn Bypass
Cables

Special Jumpers
and Bypass
Cables



Meter Socket Covers

Bladed Blank

Four molded blades hold the bladed blank meter socket cover securely in place, allowing quick, safe, two-handed installation of ring and ringless-style socket cover. Molded polycarbonate provides superior tensile and impact strength. Clear model contains an ultraviolet inhibitor that assures clear visibility for many years of outdoor use.

Models:

- 1-6002 (clear)
- 1-6112 (gray)

Unbladed

Gray, unbladed meter socket cover is made of polypropylene for an inexpensive way to blank off meter sockets.

For installation in ring or ringless style socket cover. Molded in polycarbonate for superior tensile and impact strength. All models contain an ultraviolet inhibitor that assures clear visibility for many years of outdoor use.

Models:

- 1-6003
- 1-6008 (clear)
- 1-6116 (clear)



Special Jumpers and Bypass Cables

Provides a means to restore three-wire service in a meter socket when one leg of the service has failed due to a faulty meter jaw, block assembly, or line connector in the socket.

Tamper-Resistant

Brooks tamper-resistant covers are manufactured by cold-rolling the lip of a standard Brooks polycarbonate meter-socket cover over a stainless steel insert.

Models:

- TRC-5116 (unbladed)
- TRC-5002 (bladed)



Jumper and Jumper Links

Insulated jumpers designed for jumpering from phase to phase and line to load. 100 and 200 amp available.

Models:

- 8A-1730 (100 amp)
- 8A-1730-SP261 (100 amp)
- 9A-1730-2 (200 amp)
- 5A-1012H (200 amp with heavy duty installation)
- 5A-1327-SP1619 (200 amp)

Jumper links standard 2-1/4" handles. Additional model available with various handle lengths (consult factory).



Horn Bypass Cables

This temporary jumper cable is designed for use on electric meter jaw assemblies equipped with bypass horns. The handle provides a superior connection at the horn, eliminating unwanted power disruption. Set of two cables.

Model:

- 1000-SP4735

1.888.687.3008



Indicative Seals

Short-Term Seals:

Multibar Seal

Spring-Lok® Seal

All Plastic Mini Lock

BT Aluminum Meter Seal®

ProngLok Pro4 Form

NL1 Padlock Seal



Multibar Seal

An aluminum seal designed for quick installation. Ideal for use on all demand reset mechanisms, the Multibar is self destroying if tampered with. It is available in a variety of colors to insure monthly identification and can be stamped with company initials and consecutive numbering.

Models:

- 3850000 (plain with standard bar, ribbing and small bar)
- 3860000 (painted with standard bar, ribbing and small bar)
- 3850700 (plain with 7/32" (5.56 mm) bar only and no ribbing)
- 3850500 (plain aluminum with large bar only)
- 3860700-X (painted with 7/32" (5.56 mm) bar only and no ribbing)
- 37860800-X (painted with small bar only and no ribbing)
- 3860500-X (painted with large bar only)

Note: X denotes color selection



BT Aluminum Meter Seal®

The BT Aluminum Meter Seal® is a security device for sealing electric meter back plates. The meter seal requires no tools to install or remove. The base is stamped "SEALED", and the seal is scored to fracture if unauthorized entry is attempted. Up to four letters can be stamped on flag, with the option of stamping on both sides with request. The seal comes in a variety of colors. Standard packing is 1,000/bag.

Models:

- 3571000 (plain aluminum)
- 3570000 (anodized)
- 3570500-1 (red)
- 3570500-2 (green)
- 3570500-3 (blue)



Spring-Lok® Seal

A tamper-evident seal designed for electric meter demand reset mechanisms. It is applied with one hand and removed by breaking its spear with a simple twist. Small hasp fits smaller applications. Spring-Lok® is available in a choice of twelve colors with your company name a seven digit identification number. An optional stringing hole is also available for use with a Spring-Lok® key ring.

Models:

- 6300000-X (heat stamped, custom numbered)
- 6302000-X (heat stamped w/ slit donut, custom numbered)
- 6300500-X (long shaft, heat stamped, custom numbered)
- 6302500-X (long shaft, heat stamped, w/ slit donut, custom numbered)
- 6380000-3 (economy, molded with logo only, blue)
- 6309999-4 (4" (102 mm) stringing ring)
- 6309999-6 (6" (152 mm) stringing ring)

Note: X denotes color selection



ProngLok Pro4 Seal

The ProngLok Pro 4 Seal is a metal "crimp" seal used in conjunction with a wire and secured with a sealing tool. The sealing tool provides a secure fit and a large flag provides room for embossed information. Once crimped, the wire cannot be removed without being cut or destroying the seal. Easy to install and use, it is available in aluminum or zinc coated steel. Standard packing is 1,000/box, 5,000/carton.



All Plastic Mini Lock

A one-piece indicative seal for use on demand reset mechanisms. It is made of polypropylene plastic, which will bluish if tampering occurs. This easy to install, self-locking seal features a completely enclosed locking mechanism and is easily removed using a simple cutting tool. Available in a choice of colors. Seals are embossed "Sealed Do Not Remove".

Models:

- 6720000-X (standard seal or custom color)
- 6721000-X (custom embossed, standard or custom color)



NL1 Padlock Seal

The NL-1 Padlock Seal is designed to replace lead seals and offers a safe, more secure alternative to crimp-type wire seals. Made from polycarbonate and stainless steel, it is designed to perform for over 20 years. The locking mechanism and clear body show immediate evidence of tampering and the flexible wire in any length, is molded directly to the seal for greater security. Available in a wide variety of colors. Standard packing is 100/bag, 1,000/carton.



Enduro® Seal

Constructed of durable acrylic plastic and is designed to provide long service life in harsh environments. Available with a solid body and contrasting color insert or with a transparent body and solid color insert. Seals are heat stamped with company identification and sequential numbering. Should tampering attempts take place, inclined ramps on the insert force the wire legs to break out of the body providing visible evidence.

Models:

- 60600XX-X (.047" galvanized regular hasp)
- 60610XX-X (.047" galvanized secure hasp)
- 60550XX-X (.052" galvanized secure hasp)
- 60800XX-X (.047" stainless steel regular hasp)
- 60810XX-X (.047" stainless steel secure hasp)
- 60850XX-X (.052" stainless steel secure hasp)

Note: XX-X denotes insert and body colors



Enduro Identa-Seal®

This seal has the same features as the bar coded Enduro® Seal. However, the Identa-Seal® offers a vinyl label printed with your custom message with characters ranging in size from 3/8" to 1/16". This seal is ideal for use as a long-term identification tag.

Models:

- 60657XX (.052" (1.32mm) galvanized SecurHasp®)
- 60857XX (.052" (1.32 mm) stainless steel secure hasp)

Note: XX denotes insert color



Bar-Coded Enduro®

Combines features and benefits of the previously described Enduro Seal with the advanced tracking capabilities of bar coding technology.

Models:

- 60617XX-27 (square body w/ .047"; SecurHasp®; galvanized wire)
- 60657XX-27 (square body w/ .052"; SecurHasp®; galvanized wire)
- 60817XX-27 (square body w/ .047"; SecurHasp®; stainless steel wire)
- 60857XX-27 (square body w/ .052"; SecurHasp®; stainless steel wire)

Note: XX denotes insert color selection, 27 denotes clear body



SecurHasp II®

This seal has a polypropylene UV inhibitor body and features a tamper indicating channel and a special hasp configuration that deters access by picking tools. Available in a variety of colors, it is heat stamped for easy reading with alphanumeric characters and seven consecutive numbers for identification and control.

Models:

- 6250000-X (.047" galvanized SecurHasp®, round bottom)
- 6250030-X (.047" galvanized regular hasp, round bottom)
- 6259000-X (.047" stainless steel SecurHasp®, round bottom)
- 6259008-X (.047" stainless steel regular hasp, angle cut, round bottom)
- 6250600-X (.047" galvanized SecurHasp®, square bottom)
- 6250630-X (.047" galvanized regular hasp, square bottom)
- 6259600-X (.047" stainless steel SecurHasp®, square bottom)
- 6259608-X (.047" stainless steel regular hasp, angle cut, square bottom)

Note: X denotes color selection



Plastic Padlock® Seal

These seals have a polypropylene UV inhibitor body and are available in a choice of galvanized or stainless steel hasps. Offered in a wide variety of colors, they can be cold or heat stamped with company name or logo and consecutively numbered. Plastic padlock seals can also be supplied with a blank panel, enabling you to write a descriptive identification right on the seal body.

Models:

- 6170000-X (.047" galvanized regular hasp)
- 6170003-X (.047" galvanized SecurHasp®)
- 6180000-X (.047" stainless steel regular hasp)
- 6170040-X (.047" galvanized regular hasp, paneled)
- 6170041-X (galvanized SecurHasp®, paneled)
- 6180040-X (.047" stainless steel regular hasp, paneled)

Note: X denotes color selection

Color by Number for Plastic Padlocks

- | | |
|----|-------------|
| 1 | Red |
| 2 | Green |
| 3 | Blue |
| 4 | Orange |
| 5 | Gray |
| 6 | Yellow |
| 7 | Maroon |
| 8 | Black |
| 9 | Gold |
| 10 | White |
| 11 | Pink |
| 12 | Purple |
| 13 | Dark Blue |
| 14 | Dark Green |
| 18 | Brown |
| 19 | Lime Green |
| 20 | Rose |
| 21 | Rust |
| 22 | Beige |
| 23 | Hot Pink |
| 24 | Translucent |
| 27 | Clear |
| 28 | Shrimp |

Hasp Options: All padlock seals can have:

- Bluny Cut Hasp
- Angle Cut Hasp
- Scored Hasp for toolless removal



Indicative Seals

Long-Term Seals:

Enduro® Seal

Enduro Identa-Seal®

Bar-Coded Enduro®

Plastic Padlock Color Chart

SecurHasp II®

Plastic Padlock® Seal

1.888.687.3008



Indicative Seals

Long-Term Seals:

Laser Etched Bar-Coded Enduro®

Roto Seal®

Toolless Roto Seal®

SplitLok™ Seal

Multi-Lok™ Cable Seal

Brooks KP™ Keyless Padlock



Laser Etched Bar-Coded Enduro®

Models:

- 60618XX-27 (square body w/.047" SecurHasp®, galvanized wire)
- 60658XX-27 (square body w/.052" SecurHasp®, galvanized wire)
- 60818XX-27 (square body w/.047" SecurHasp®, stainless steel wire)
- 60858XX-27 (square body w/.052" SecurHasp®, stainless steel wire)

Note: XX denotes insert color selection, 27 denotes clear body



Plastic Padlock with Medical Caduceus

The same Plastic Padlock as described on page 32 can be decorated with a caduceus symbol, commonly used by medical organizations. The symbol is heat stamped along with a 7 digit number.

Models:

- 6170800-X (.047" galvanized square bottom)
- 6170700-X (.047" galvanized round bottom)

Note: X denotes color selection



SplitLok™ Seal

Has a unique polypropylene body that is designed to split in half in case of tampering. However, it continues to deter theft because the split body halves remain firmly attached to the hasp ends, preventing the seal from being removed. Heat stamping is available with up to seven digits and your company name or initials.

Models:

- 6000000-X (.047" galvanized, regular hasp)
- 6000600-X (.047" galvanized, SecurHasp®)
- 6050000-X (.047" stainless steel, regular hasp)
- 6051000-X (.047" stainless steel SecurHasp®)

Note: X denotes color selection



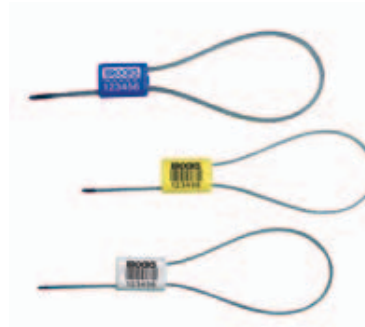
Roto Seal®

Is a two-piece acrylic seal with a transparent body and colored insert. It is an ideal seal for securing applications with small diameter holes. It utilizes a unique sealing press with the same, simple squeeze action used to affix traditional lead and wire seals. Color coded insert and heat stamped numbering promotes control and tracking.

Models:

- 70000XX-XX (w/o wire)
- 70508XX-27 (w/ galvanized 8" (203 mm))
- 70510XX-27 (w/ galvanized 10" (254 mm))
- 70512XX-27 (w/ galvanized 12" (305 mm))
- 70608XX-27 (w/ Monel 8" (203 mm))
- 70610XX-27 (w/ Monel 10" (254 mm))
- 70612XX-27 (w/ Monel 12" (305 mm))
- 7021100XX-XX (Roto Press w/ blank die)
- 7031100XX-XX (Roto Press w/ male engraved die)

Note: XX denotes insert and body color, 27 denotes clear body



Multi-Lok™ Cable Seal

A high security disposable cable seal supplied with a braided steel cable available in two diameters: 1/16" (2 mm) or 1/8" (3.2 mm). Standard cable length is 12 inches (30 cm). Multi-Lok™ is available in a metallic finish or a variety of colors. Seals are stamped with company name and consecutive numbering or bar coded. Removal requires cable cutters.

Models:

- 8919012 (1/16" – stamped)
- 8959012 (1/8" – stamped)
- 9259213 (cable cutter; ridged model C9-13")



Toolless Roto Seal®

This seal operates on the same principle as the Roto-Seal®, but requires no sealing tool. Made from durable acrylic plastic, this seal has a transparent body and a colored insert. It is available with or without a pre-installed stainless steel wire. The Toolless Roto-Seal® features a large flag, which is heat stamped with company name or logo and consecutively numbered. Laser etched bar coding available in Interleaved 2 of 5, Code 39 or Code 128. For added security, the last three digits of the seal number are laser etched onto the insert.

Models:

- 74000XX-27 (w/o attached wire)
- 74108XX-27 (w/ attached 8" plastic coated wire)
- 74708XX-27 (w/ attached 8" 7 x .009" (.2mm) soft stainless wire)
- 76708XX-27 (w/ bar code w/ attached 8" 7 x .009" (.2 mm) soft stainless wire)

Note: XX denotes color selection, 27 denotes clear body



Brooks KP™ Keyless Padlock

The Brooks KP™ Keyless Padlock installs easily without tools, secures tightly and cannot be broken without a cutting tool. Made from corrosion resistant zinc alloy the KP Lock is designed to prevent unauthorized entry into energized cabinets and is a simple, cost-effective answer to revenue protection and security needs.

The 3/16" diameter hasp slides into the lock body allowing adjustable vertical clearance and secures instantly.

Models:

- 2-1046



Locking Hardware

Lock and Key:

F Series

G Series

S-1000 Series

I Series

F Series

The standard design security lock for utility metering locking devices. Available in case hardened or stainless steel and with an

optional weather seal. Interchangeable with standard locks from other manufacturers.

Models: Barrel Locks

- 8509900 (hardened steel "F" barrel lock w/o cap)
- 8509910 (hardened steel "F" barrel lock w/ cap)
- 8509901 (hardened steel "F" barrel lock w/ hole drilled in head)
- 8509718 (hardened steel "F" barrel lock w/ cap and weather seal)
- 8504700 (stainless steel "F" barrel lock w/o cap)

- 8504720 (stainless steel "F" barrel lock w/ stainless steel cap)
- 8509708 (hardened steel "F" barrel lock w/ weather seal)
- 8504708 (stainless steel "F" barrel lock w/ weather seal)

Barrel Lock Keys

- 8610005 (sliding finger style)

- 8612000 (collet style)
- 8612500 (repairable collet style)
- 1525520 (replacement cartridge)

Barrel Lock Tools

- 1502919 (barrel lock cleaning tool)
- 1502920 (barrel lock cleaning tool with loop/ring)

G Series

A high security system available in three non-interchangeable combinations: G1, G2 and G3. The G1 and G2 are made from case

hardened or stainless steel. G3 locks are stainless steel only. Unique plunger design is virtually pickproof.

Models: Barrel Locks

- 8524700 (stainless steel "G1" barrel lock w/o cap)
- 8524710 (stainless steel "G1" barrel lock w/ hardened steel cap)
- 8524720 (stainless steel "G1" barrel lock w/ stainless steel cap)
- 8529700 (hardened steel "G1" barrel lock w/o cap)
- 8529710 (hardened steel "G1" barrel lock w/ hardened steel cap)
- 8534700 (stainless steel "G2" barrel lock w/o cap)

- 8534720 (stainless steel "G2" barrel lock w/ stainless steel cap)
- 8539700 (hardened steel "G2" barrel lock w/o cap)
- 8539710 (hardened steel "G2" barrel lock w/ hardened steel cap)
- 8544700 (stainless steel "G3" barrel lock w/o cap)
- 8544720 (stainless steel "G3" barrel lock w/ stainless steel cap)

Barrel Lock Keys

- 8615000 (G1 series key)
- 8616000 (G2 series key)
- 8617000 (G3 series key)

- 8615500 (G1 series repairable key)
- 8616500 (G2 series repairable key)
- 8617500 (G3 series repairable key)
- 1527520 (G1 repairable key cartridge)
- 1527522 (G2 repairable key cartridge)
- 1527523 (G3 repairable key cartridge)

Barrel Lock Tools

- 1502919 (barrel lock cleaning tool)
- 1502920 (barrel lock cleaning tool w/ key ring)

S-1000 Series

A high security barrel lock and key system that offer progressive levels of security. Its unique product design permits a one-key system. This means the S1000 key will open the S1000 lock, plus all competitive standard design barrel locks. All internal components

of the S1000 Barrel Locks are stainless steel. The lock bodies are available in stainless steel or cadmium plated hardened steel. The S1000 system design offers superior tamper deterrence.

Models: Barrel Locks

- 8554700 (stainless steel w/o cap)
- 8554710 (stainless steel w/ hardened steel cap)
- 8554720 (stainless steel w/ stainless steel cap)
- 8554701 (stainless steel w/ seal hole)
- 8559700 (hardened steel w/o cap)

- 8559710 (hardened steel w/ hardened steel cap)
- 8559720 (hardened steel w/ stainless steel cap)

Barrel Lock Keys

- 8619000 (S-1000 series key)
- 8619100 (S-1000 series key – serial # on handle)
- 8619500 (S-1000 repairable key)

- 1528715 (replacement cartridge)

Barrel Lock Tools

- 1502920 (barrel lock cleaning tool w/ key ring)

I Series

The I-3 and I-4 barrel locks provide high security protection for ring- and ringless-style meter sockets and gas valves. Offers high security with a unique key; a weather seal for keyway protection against bugs, dirt and debris; and a key that can be repaired in the

field. The I-3 and I-4 are comparable to the Jimi/3 Dot and the Mark IV/4 Dot barrel locks.

Models:

- I3 8613500
- I4 8614500

1.888.687.3008



Locking Hardware

Gas and Water:

Connection Nut Lock

Wing-Type Valve Protector®

Water Union Nut Lock

Locking Pipe Plug

KD Bar



Connection Nut Lock

Is a case hardened steel device that completely encloses the connection nut and is secured with a barrel lock. Cadmium plated for corrosion resistance. Available in four sizes: 1A, 5LT, 10LT, and 20LT. Can be used for gas or water applications.

Models:

- 8320020 connection nut lock w/ barrel lock F and end cap
- 8320025 connection nut lock w/ 1A LT insert w/ barrel lock F 8509900
- 8329005 – 1/2" 5LT assembly w/o barrel lock
- 8329010 – 10LT assembly w/o barrel lock
- 8320010 connection nut lock w/ 5/8" insert w/ barrel lock F
- 8329020 – 3/4" 20LT assembly w/o barrel lock
- 8329025 – 1" 1A assembly w/o barrel lock



Locking Pipe Plug

This plug prevents unauthorized use of service during meter or service piping change outs. This cadmium-plated, case hardened-steel plug is secured with a barrel lock. For gas applications: 1/2", 3/4", 1" and 1-1/4" sizes. For water applications: 1" and 1-1/4" sizes. Their use with one of a variety of plastic seals to indicate tampering is recommended.

Part Number	Thread Size
-------------	-------------

Gas Plugs

8431100	1/2"
8432100	3/4"
8433100	1"
8434100	1-1/4"

Water Plugs

8423100	1"
8424100	1-1/4"



Wing-Type Valve Protector®

These protectors are impervious to hacksaws and hammer blows, preventing cast iron brass gas valve cock wings from being sawed or broken off. Made of case hardened and plated steel, these gas cock protectors also completely enclose the barrel lock, precluding it from physical attack. They are complete with seal adapter to accommodate a Brooks UPG plastic padlock.

Models:

- 8702500 (Wing Cock Protector w/o barrel lock)
- 8712599 Zinc
- 8712500 - Zinc with S1000 Lock



Water Union Nut Lock

The Union Nut Lock is a high security locking device designed to secure gas and water meters. This three component, case-hardened, plated steel assembly encapsulates water union nuts, with the assembly securely locked by a barrel lock.

Models:

- 8400075 (3/4" assembly w/o barrel lock)
- 8400100 (1" assembly w/o barrel lock)



KD Bar

Makes securing several sizes of gang meter sockets easy with its smooth sliding design. Made from powder coated hardened steel, locks across the front covers of the gang socket. Either a padlock style or barrel lock style is available. Optional center lock bracket is available for added security.

Part Number	Description
8830000	Small KD Bar quick pin lock adjust from 25" to 37"
8831000	Large KD Bar quick pin lock adjust from 37" to 64"
8840700	Small KD Bar quick lock w/ steel seal adapter adjust from 25" to 37"
8841700	Large KD Bar quick lock w/ steel seal adapter adjust from 37" to 64"
8850000	KD Bar Center Lock Bracket quick pin lock style
8855000	KD Bar Center Bracket barrel lock style



Locking Hardware

Lock Accessories

S-Shaped T-Slot Adapter

Barrel Lock Puller

Opti Lock

Connection Nut Seal

Barrel Lock Guard

Indicative Padlock



S-Shaped T-Slot Adapter

The S-shaped adapter with slotted end cap can be locked with any standard barrel lock. This economical locking hardware is designed to secure ringless meter sockets. Made of case hardened steel with yellow chromate plating. This seal adapter is pressed in to protect barrel lock and provide sealing point. The heavy-duty slotted end cap provides added security. This seal is used in conjunction with a barrel lock.

Models:

- 8750000 (T-shaped adapter w/ seal adapter)
- 8720000 (Heavy duty slotted end cap)
- 8751000 (Adapter and cap)



Barrel Lock Puller

The clamshell style barrel lock puller grips tightly around the head of a barrel lock to remove troubled locks. Using a 5/16" allen wrench, tighten the end of the puller around the head of the lock. Then use a 5/8" wrench to turn the nut on the rear of the puller which pulls the lock out of device in which it was installed.

Model:

- 8990000



Opti Lock

Prevents unauthorized access to metering data. Safeguards ports from the environment. Company name/logo may be inserted. This patented device is easy to install and seal with long-term, demand or cable lock seals.

Model:

- 2-1022



Indicative Padlock

Brooks Indicative Padlocks are the first to provide all the protection and reusability of classic padlocks, along with the tamper indication/deterrence feature of Brooks' single-use seals.

Unlike traditional padlocks that can be opened and re-closed without any evidence of tampering, Brooks' Indicative Padlocks feature a 1/8" diameter bored hole that passes through the body and shackle. Applying a uniquely numbered, Brooks' indicative seal through this cavity prevents the padlock from being opened without first having to remove and destroy the seal.

Call Brooks for size details.



Connection Nut Seal

This molded plastic seal should be the first line of defense to discourage tampering of connection nuts. Made of poly plastic, its mated halves install around the connection nut without tools. Access to the nut can only be gained by breaking the seal, providing an obvious sign of tampering. For gas (water) applications: 5LT (1/2"), 10LT (5/8"), 20LT (3/4"), 1A (1") and 30LT (1-1/2").

Models:

- 83600XX-X (transparent color)
- 83610XX-X (solid color)
- 83620XX-X (transparent color heat stamp)
- 83630XX-X (solid color heat stamp)

NOTE: XX denotes LT size; X denotes color



Barrel Lock Guard

A case hardened and plated steel device mounted on the cover of a ringless meter box to protect the barrel lock from attack. Used with an angle bracket mounted inside the box. Two holes must be drilled to install these devices. Mounting templates are available to help position drill holes.

Models:

- 8650500 (Barrel Lock Guard w/ seal adapter)
- 8651500 (waterproof Barrel Lock Guard w/ seal adapter)
- 9100000 (flangeless bracket to Barrel Lock Guard)
- 8781000 (guard and bracket)
- 8690000 (flangeless bracket)



Locking Hardware

Lock Accessories

Quick Pin Lock

Quik Lock II™



Quick Pin Lock

The Quick Pin Lock is used to secure ringless or gang style meter sockets. The device uses a machined pin which inserts into the chamber of a brass padlock. The pin and lock secure a hardened steel bracket that holds the cover of the meter socket in place. The Quick Pin Lock uses the same mounting bracket and screw as the Quik Lock II™. Bottom and side mount units available.

Part Number	Description
8820000	Side mount, 3/8" pin without padlock
8820001	Side mount, 3/8" pin with padlock
8820010	Side mount, 5/16" pin without padlock
8820011	Side mount, 5/16" pin with padlock
8821000	Bottom mount, 3/8" pin without padlock
8821001	Bottom mount, 3/8" pin with padlock
8821010	Bottom mount, 5/16" pin without padlock
8821011	Bottom mount, 5/16" pin with padlock
8822000	Universal mount, 3/8" pin without padlock
8822001	Universal mount, 3/8" pin with padlock
8822010	Universal mount, 5/16" pin without padlock
8822011	Universal mount, 5/16" pin with padlock



Quik Lock II™

Get increased security and easy installation with the improved Quik Lock II™. Features include a stronger bracket and a screw design that offers a firmer anchor on the wall of the meter socket. Like the original Quik Lock, the Quik Lock II™ is easy to install, with no holes to punch in the enclosure and no tools required for installation. It accepts all standard length barrel locks and is available with side, bottom or universal mount brackets.

Part Number	Description
8897400	Composite lock body, side mount, with plastic seal adapter
8899400	Composite lock body, bottom mount, with plastic seal adapter
8898400	Steel lock body, side mount, with plastic seal adapter
8898700	Steel lock body, side mount, with steel seal adapter
8900400	Steel lock body, bottom mount, with plastic seal adapter
8900700	Steel lock body, bottom mount, with steel seal adapter
8901400	Zinc lock body, side mount, with plastic seal adapter
8901700	Zinc lock body, side mount, with steel seal adapter
8902400	Zinc lock body, bottom mount, with plastic seal adapter
8902700	Zinc lock body, bottom mount, with steel seal adapter
8903400	Steel lock body, universal mount, with plastic seal adapter
8903700	Steel lock body, universal mount, with steel seal adapter
8904400	Zinc lock body, universal mount, with plastic seal adapter
8904700	Zinc lock body, universal mount, with steel seal adapter
8905400	Composite lock body, universal mount, with plastic seal adapter



Slip-Lock Sealing Ring

Simple, low-cost stainless steel slip lock meter sealing ring. Properly marked with forward orientation.

Model:

- 10-9001



Handi-Ring® Screw-Type Sealing Ring

No tools are needed to install Brooks patented stainless steel Handi-Ring®, engineered for strength, long life and easy installation. Designed with the meter person in mind, this screw type sealing ring is equipped with exclusive easy-grip tabs and a finger-grip screw that allows fast-tightening in most installations.

Models:

- 10-9090
- 10-9090 with Padlock Clip (8042040)

Omni-Ring

This ring is an economical stainless steel meter ring which locks with a machined bolt and a sequentially numbered and stamped locking case. A Brooks plastic padlock seal can be used to heighten its tamper deterrence and increase security. A special removal tool is required.

Models:

- 8481000 (stainless steel Omni-Ring)
- 9254242L (Omni-Ring removal tool)

Redi-Ring 2000

This ring is a one-piece, front-entry, locking ring with steel or plastic seal adapter. Available in stainless or hardened steel, it can be used on most individual residential sockets and multiple apartment meter panels. A barrel lock is required to secure this device.

Models:

- 8470100 (stainless steel with zinc seal adapter)
- 8470300 (stainless steel with portable plastic seal adapter)
- 8470400 (stainless steel with permanent plastic seal adapter)
- 8450700 (hardened steel with hardened steel seal adapter)
- 8450300 (hardened steel with portable, plastic seal adapter)
- 8450400 (hardened steel with permanent steel seal adapter)



Click Ring

The Click Ring features a built-in barrel lock for keyless installation. The high security ring is ideal for AMI deployment or contractor installation, as it can be installed without a key. Ring design promotes utility security and key control.

Models:

Stainless Steel		Hardened Steel	
• 8730019	F	• 8720013	F
• 8730046	G-1	• 8720017	G-1
• 8730040	G-2	• 8720018	G-2
• 8730055	G-3	• 8720056	G-3
• 8730072	I-3	• 8720072	I-3
• 8730073	I-4	• 8720073	I-4



Trigger Ring

Newly developed, innovative, secure stainless steel barrel lock sealing ring. Since metering locations will not be visited as often with AMI, some utilities are electing to put more secure sealing rings on these installations but cost of current barrel lock rings can be prohibitive. The Trigger Ring's unique adjustable lock protector

housing allows the ring to be easily cinched up tight – yet sells for less than other barrel lock rings.

Note: The Model 10-9095 ring can be ordered with or without a barrel lock. Please add the following suffix, depending on desired barrel lock.

Suffix	Barrel Lock Part Number	Description
-00	None	Ring comes without barrel lock
-10	8509900	F Lock Ledloy
-05	8504700	F Lock Stainless Steel
-19	8504708	F Lock Stainless Steel w/ weather seal
-52	8574708	B-53 Lock Stainless Steel w/ weather seal



Sealing / Locking Rings

Slip-Lock Ring
Stainless Steel

Handi-Ring®
Screw-Type
Sealing Ring

Omni-Ring

Redi-Ring 2000

Trigger Ring

Click Ring



With half a century of helping utilities meet their meter connection requirements, Brooks Utility Products is the premiere choice among America's leading manufacturers of specialized utility products.

More important, our broad utility industry experience, engineering expertise, specialized manufacturing capabilities and proven quality control make us the ideal partner for developing new components and applications.

Whether you require products and components from our extensive inventory or a custom-designed solution, Brooks Utility Products has the answers.



We Have Answers.™

23847 Industrial Park Drive
Farmington Hills, MI 48335
1.888.687.3008
www.brooksutility.com